



FISU
WORLD
UNIVERSITY
GAMES
SUMMER



FISU
WORLD
UNIVERSITY
GAMES
SUMMER



CHENGDU 2021 FISU WORLD UNIVERSITY GAMES

CHENGDU 2021 FISU WORLD UNIVERSITY GAMES

FENCING TECHNICAL HANDBOOK



Chengdu Makes Dreams Come True

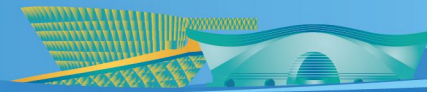
Table of Contents

1. Welcome Messages	4
1.1. FISU President	4
1.2. Organising Committee	6
2. Abbreviations	18
3. Contacts	20
3.1. FISU Secretariat	20
3.2. Organising Committee	20
3.3. FIE	20
4. General Information	22
4.1. Country and City	22
4.2. Key Facts and Figures	25
5. Service Information	28
5.1. Arrival and Departure	28
5.2. FISU World University Games Village	28
5.3. Accreditation	32
5.4. Transportation	33
5.5. Food and Beverages	35
5.6. Medical Care	36
5.7. Ticketing	39
5.8. Weather Information	39

6.	Competition Information	42
6.1.	Technical Committee.....	42
6.2.	Technical Regulations	42
6.3.	Competition Format	44
6.4.	Sport Entries and Eligibility	45
6.5.	Competition and Training Venues	46
6.6.	Competition Schedule	47
6.7.	Training Schedule	53
6.8.	Technical Meetings	53
6.9.	Technical Officials	55
6.10.	Protest and Appeals.....	56
6.11.	Late-Athlete Replacement Policy	57
6.12.	Equipment and Uniforms	57
6.13.	Doping Control	58
6.14.	Awards and Medals	60
6.15.	Media Interviews.....	61
6.16.	Timing and Scoring	61
6.17.	Results	62
6.18.	Sport Information Services	62
7.	Transportation Schedule	66
8.	Appendices	68

1. Welcome Messages





1. Welcome Messages

1.1. FISU President

Dear friends,

On behalf of everyone at the International University Sports Federation (FISU), I am delighted to welcome you to Chengdu, for the summer edition of the FISU World University Games. Please accept my best wishes for a safe and successful experience, and my gratitude for your own contribution to that safety and success. It is without doubt that the challenges faced by the Organising Committee of Chengdu 2021 have been without precedent.

It is also without doubt that as the world comes to terms with a new reality, much greater emphasis is being placed on public health.

As a result, the need for university sport for millions of university students around the world has never been greater. And so is the need for FISU's vision of positively shaping tomorrow's leaders through their experiences of international university sport.

This is why my colleagues and I are pleased to see that despite the challenging circumstances, the Chengdu 2021 Organising Committee has continued to move effectively towards delivering an exceptional FISU World University Games that places athlete welfare at its core.

This handbook represents a significant part of this progress. It has been created to provide you with comprehensive information regarding various functional areas, that will help you contribute to the success of the FISU World University Games.

We are deeply grateful to the Organising Committee of Chengdu 2021 and the supporting public authorities for their continued commitment to deliver on the great promise of an exceptional university sport experience. And FISU remains here to help you every step of the way, by your side.

With warmest regards,

MATYTSIN Oleg

President of the International University Sports Federation



1.2. Organising Committee

Dear friends,

The Chengdu 2021 FISU World University Games will take place in Chengdu in June 2022. On behalf of the Organising Committee and the Ministry of Education of the People's Republic of China, I hereby extend a warm welcome and sincere greetings to all of you.

The FISU World University Games will bring together the world's youth and serve as a global bridge for cultural exchange. In addition, they will be a great boost to education and sports at universities worldwide. I hope that the young athletes participating in these Games will get to know one another better, continue making progress and push their own boundaries as they compete, learn and communicate. This is how they can manifest their ambitions and commitment in this era for building a community with a shared future for humanity.

The Organising Committee will work with the authorities of Sichuan Province and Chengdu to provide you with the best services, as this will help you deepen your knowledge about China's ancient history and modern dynamism. We are confident that the Chengdu 2021 FISU World University Games will be hugely successful and extremely exciting as an international sports gathering.

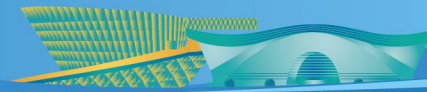
Again, welcome to Chengdu. I hope that you have a memorable stay and make your dreams come true here.

May the Chengdu 2021 FISU World University Games be a big success!

HUAI Jinpeng

Minister of Education of the
People's Republic of China

President of the Organising Committee of the
Chengdu 2021 FISU World University Game



Dear friends,

The FISU World University Games form the world's largest sports gathering for university students. On behalf of the General Administration of Sport of China and the Organising Committee of the Chengdu 2021 FISU World University Games, I hereby extend my warmest welcome and sincerest greetings to all of you.

We have invited university athletes from across the world to this global event combining sports, education and culture. Sports promote health, and young people create the future. The Chengdu 2021 FISU World University Games will be held during the fight against the COVID-19 pandemic. As such, it has a special significance in terms of inspiring the young to confront challenges, enhancing the global awareness of sports and health, and shaping a brighter future for humanity. The Organising Committee will spare no efforts to provide premium services as we strive to present the world with a grand sports and culture gathering that sparkles with the vitality of youth.

We have opened our arms to university athletes, coaches, judges and other friends from around the world. Here in Chengdu, you will make your dreams come true and develop new friendships.

May the Chengdu 2021 FISU World University Games be a complete success!

GOU Zhongwen

Minister of the General Administration of Sport of China

President of the Organising Committee of the
Chengdu 2021 FISU World University Games



Dear friends,

The Chengdu 2021 FISU World University Games will begin on 26 June 2022 in Chengdu, Sichuan, the People's Republic of China. On behalf of the Sichuan Provincial People's Government and the province's 91 million people, I would like to extend a warm welcome to guests from countries/regions around the globe.

Sichuan is a powerhouse of science and education, and it is also a populous economic stronghold in West China. It's home to the giant panda, one of the country's national treasures. Steeped in history and blessed with scenic beauty, it is renowned as the Land of Abundance, where people enjoy the comforts and pleasures that life has to offer. Chengdu, the capital of the province, is a poetic and picturesque city. It is West China's center of economy, science, technology, finance, cultural creativity and international exchanges. It is also an international transportation and communications hub. As one ancient Chinese poem goes, "Out of the heavenly place created Chengdu, where every single house is like a part of a breathtaking painting." Today's Chengdu is accelerating its effort to build itself into a park city practicing the new development philosophy and embracing the world with greater openness and inclusiveness.

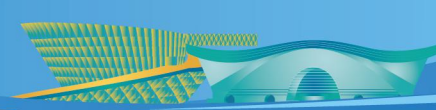
The FISU World University Games is the most influential sports gathering for young people around the world. Since winning its bid to host the Games, Sichuan and Chengdu have been preparing meticulously. Our hospitable people look forward to meeting the world's university athletes – athletes who will make their dreams come true and experience memorable moments in Chengdu.

Let's join hands to secure first-rate preparation and organisation for an exceptional and successful Chengdu 2021 FISU World University Games that lives up to international standards, represents Chinese characteristics and Sichuan features, and showcases the charm of youth. Let's write a new chapter for the FISU World University Games.

HUANG Qiang

Governor of Sichuan Provincial People's Government

Executive President of the Organising Committee of the
Chengdu 2021 FISU World University Games



Dear friends,

In June 2022, the FISU World University Games will be held in Chengdu. The event is made possible by our achievements in this glorious era and will gather young people from various parts of the world. On behalf of the Federation of University Sports of China, I hereby extend a warm welcome to all delegations, as well as a heartfelt thanks to the International University Sports Federation (FISU) and everyone who has supported Chengdu in its efforts to host the Games.

Under the auspices of FISU and the Organising Committee, Chengdu is making smooth progress in its preparations for the Games, and it is taking on a new look to welcome university athletes and guests from around the globe.

In June 2022, the flame of the FISU World University Games will be lit in Dong'an Lake Sports Park Stadium in Chengdu, where we will once again extend a warm welcome to all the athletes that will be competing in Chengdu. As you uphold the spirit of sportsmanship and tenacity and fulfill your aspirations during the Games, you will be engaging in heart-to-heart communication with different cultures, experiencing the charming diversity of civilisations, and manifesting the power of youth to help create mankind's future.

We are convinced that the Chengdu 2021 FISU World University Games will promote sports among young people in China and the world at large. Friendship among countries will be strengthened, thus boosting global development.

May the Chengdu 2021 FISU World University Games be a huge success!

HAO Ping

President of the Federation of University Sports of China

Vice President of the Organising Committee of the
Chengdu 2021 FISU World University Games



Dear friends,

The FISU World University Games will take place from 26 June to 7 July 2022 in Chengdu. On behalf of Chengdu Municipal People's Government and 16 million Chengdu citizens, I would like to extend a warm welcome to the young athletes, officials, media friends and guests arriving from all over the world, and I would like to express my gratitude to everyone who has supported us in preparing for the Games.

Since ancient times, Chengdu has been renowned as "the Land of Abundance". This is a city with a profound civilisation of more than 4500 years and an urban history of 2300 years. Featuring both natural beauty and cultural profundity, it is home to the giant panda, China's national treasure, and it is one of the first National Famous Historical and Cultural Cities. Chengdu boasts a pleasant climate, intoxicating scenery, and prosperity. Its natural and cultural endowments have given rise to an athletic lifestyle and have imprinted sports into the city's character. In recent years, the city has improved its sports facilities and gained considerable experience in organising events. It is now well positioned to host large, multi-sport events.

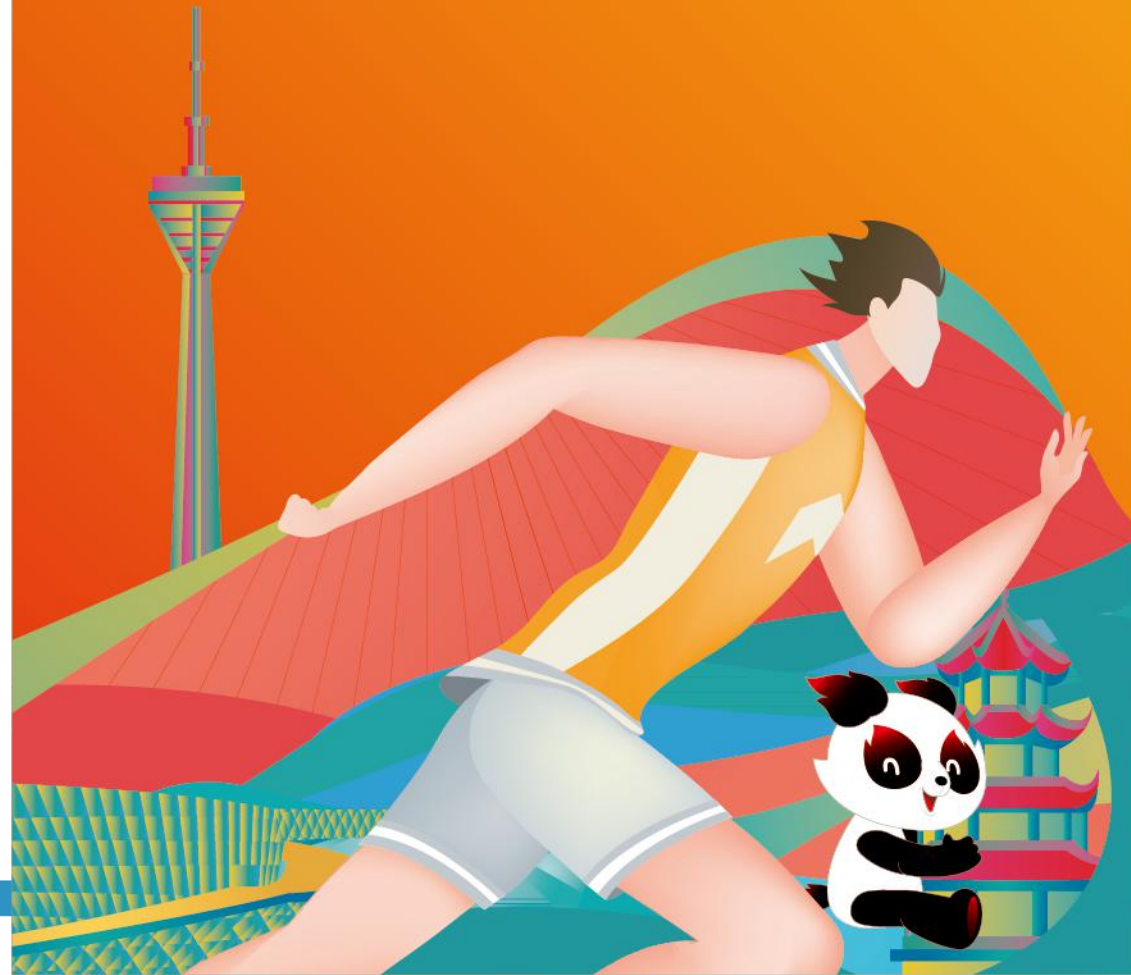
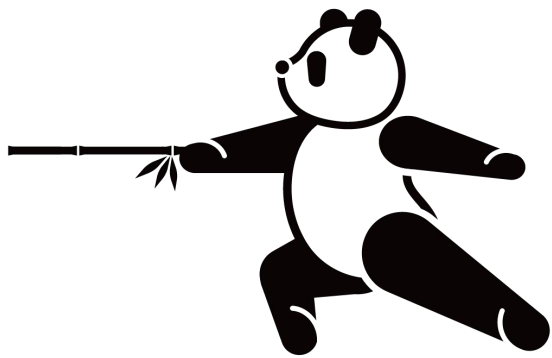
The Chengdu 2021 FISU World University Games will bring fresh vitality and a sense of honour to this park city at the foot of snowy mountains. As we are in full gear preparing for the Games, we also care how Chengdu, its people and its various sectors can benefit as a result. Our world-class facilities, thorough organisation and considerate services will make the Games a great success and will write a wonderful chapter in the history of the FISU World University Games.

WANG Fengchao

Mayor of Chengdu Municipal People's Government

President of the Executive Committee of the
Chengdu 2021 FISU World University Games

2. Abbreviations



2. Abbreviations

Abbreviations	Glossary
CEO	Chief Executive Officer
CMI	International Medical Committee
ITC	International Technical Committee
FISU	International University Sports Federation
HoD	Head of Delegation
IF	International Federation
ITO	International Technical Official
NF	National Federation
NTO	National Technical Official
NUSF	National University Sports Federation
OAS	FISU Online Accreditation System
OC	Organising Committee
FISU WUG	FISU World University Games
TCC	Technical Committee Chair
TO	Technical Official
WADA	World Anti-Doping Agency
TD	Technical Delegate
PI	Intention of Participation Form
CIC	International Control Committee
TUE	Therapeutic Use Exemption
DCS	Doping Control Station
MAC	Main Accreditation Centre
SIC	Sport Information Centre
FIE	Fédération Internationale d'Escrime

3. Contacts



3. Contacts

3.1. FISU Secretariat

President: MATYTSIN Oleg
Secretary General/CEO: SAINTROND Eric
Address: Quartier UNIL-Centre, Batiment Synathlon, 1015 Lausanne,
Switzerland
Tel.: +41 (0) 216926400
E-mail: summergames@fisunet.net
Website: www.fisunet.net

3.2. Organising Committee

President: HUAI Jinpeng
GOU Zhongwen
Executive President: HUANG Qiang
President of the Executive Committee: WANG Fengchao
Address: Building #4, Tianfu International Financial Centre, 996 North
Tianfu Avenue, Chengdu, Sichuan, China
Tel.: +86 (28) 62033026
Fax: +86 (28) 62033026
E-mail: delegation_service@2021chengdu.com
Website: www.2021chengdu.com/cn/

3.3. Fédération Internationale d'Escrime (FIE)

President: USMANOV Alisher
Secretary General: KATSIADAKIS Emmanuel
Address: Maison du Sport International, Avenue de Rhodanie 54, 1007
Lausanne - Suisse
Tel.: +41 213203115
Fax: +41 213203116
Email: info@fie.ch
Official website: <http://www.fie.org>

4. General Information





4. General Information

4.1. Country and City

4.1.1. China

Located in Eastern Asia and next to the Western Pacific Ocean, China has around 9.6 million square kilometers of land area, more than 18,000 kilometers of coastline to the east and south and about 4.7 million square kilometers of water area in its inland and marginal seas. More than 7600 islands are dotted around its territorial waters, with Taiwan being the biggest island, covering 35,798 square kilometers. China borders 14 countries and is adjacent to eight countries via sea. Its administrative division includes four municipalities directly under the Central Government, 23 provinces, five autonomous regions and two special administrative regions. Beijing is its capital city.

4.1.2. Chengdu

Chengdu, known colloquially as "Rong," is the capital of Sichuan province. As a national central city and an emerging world city, it's an important national centre of economics, science, technology, finance, cultural and creative industries and foreign exchange, in addition to being an international transportation and communication hub. Known as the "Land of Abundance", Chengdu is home to approximately 16 million permanent residents. Chengdu is a famous historical and cultural city in China, and it's the origin of the ancient Shu civilisation and Taoism with over 4500 years of urban civilisation and 2300 thousand years of history as a city. As the first Asian city recognised by UNESCO as a City of Gastronomy, Chengdu boasts its world-renowned Sichuan cuisine, its exquisite and diverse local delicacies and its spicy, tongue-numbing and delicious hotpot. Chengdu, the home of the giant panda, China's national treasure, is also home to world natural and cultural heritage sites including Mount Qingcheng, the Dujiangyan Irrigation System and the Sichuan Giant Panda Sanctuaries and it has been recognised as the best tourist destination in China by the National Tourism Administration and the World Tourism Organisation.

4.1.3. Climate and Weather Information

a. Climate

Located on the west side of the Sichuan basin, Chengdu has a humid sub-tropical monsoon climate characterised by mild weather with no extreme heat during the summer, little snow during the winter, a long frost-free period, plenty of precipitation during the autumn and at night, low wind speeds and high humidity.

Its average annual temperature is 16.1°C. Its average annual precipitation is 922.7 mm, and its average annual humidity 81%.

- Temperature (°C)

Year		Jan.	Feb.	Mar.	Apr.	May.	Jun.	Jul.	Aug.	Sept.	Oct.	Nov.	Dec.	Ave
2018	Average	5.7	8.2	15.8	19.3	22.4	24.1	25.9	27.2	20.9	16.4	11.3	6.9	17.0
	High	18.2	22.7	28.2	32.1	36.6	36.0	37.0	37.4	36.7	26.6	24.3	18.5	37.4
	Low	-5.3	-1.7	3.8	2.4	11.9	14.9	20.1	20.1	15.8	7.4	1.9	-3.3	-5.3
2019	Average	6.2	7.9	12.6	19.7	20.0	24.4	24.8	26.2	20.9	17.5	12.4	8.5	16.8
	High	15.3	21.0	28.0	36.3	31.9	34.9	35.2	37.4	31.1	32.3	23.1	16.9	37.4
	Low	-2.6	-1.9	2.0	8.0	11.7	13.8	16.1	17.9	10.8	7.1	-2.2	-0.4	-2.6
Normal temperature	Average	7.6	10.1	14.3	16.5	23.3	25.3	25.4	25.3	21.5	16.0	13.3	6.0	17.0
	High	15.5	23.6	29.4	32.9	39.5	36.9	38.9	37.5	33.5	23.7	24.4	14.6	39.5
	Low	-1.1	-2.4	3.3	4.4	12.0	14.9	17.9	16.7	15.4	7.4	3.2	-3.5	-3.5



- Precipitation (mm)

Year	Annual Average Total	Jan.	Feb.	Mar.	Apr.	May.	Jun.	Jul.	Aug.	Sept.	Oct.	Nov.	Feb.
2018	1417.4	4.4	10.2	36.6	67.5	115.3	204.3	566.0	156.0	180.6	46.9	15.5	14.1
2019	1070.0	3.8	9.5	33.1	54.5	136.0	68.3	265.5	230.7	171.9	67.7	26.7	2.3
2020	1251.9	8.7	7.0	24.0	28.8	46.4	111.5	167.8	695.1	83.3	52.9	6.2	20.3
Normal temperature	922.7	10.5	14.4	26.0	49.8	78.4	116.8	212.4	223.3	127.7	43.1	17.8	7.5

b. Weather in Late June and Early July

It's a relatively hot period of the year. The temperature averages 24.4°C in late June and 24.8°C in early July, and goes up gradually in between. This comes with abundant precipitation and high humidity. The average wind speeds are relatively low and horizontal visibility is high, despite the occasional occurrence of severe convective weather.

- Temperature

The average temperature is 24.4°C in late June and 24.8°C in early July, and the difference between day and night is about 12°C. The temperature is stable, with the highest temperatures during the day ranging from 31°C to 37°C.

- Precipitation

With an average rainfall of 103.5 mm, this period has more rain than other months. It mostly rains at night and only for a short duration of about 1-3 hours in the daytime. Frequent heavy rainfall which would severely impact the competition is not expected.

- Humidity

The average humidity between late June and early July is 82%, minimum 35% and maximum 100%.

- Wind

There is often wind-free or very low wind speeds from late June to early July, with an average wind speed of 1.2 m/s. Northerly wind or northeasterly wind prevails, with the lowest wind speeds from the wee hours to 8 am. Winds gather speed at noon and slow down in the evening. Convective gusts occur occasionally with a very short duration usually within 30 minutes.

-Visibility

The period from late June to early July has high visibility and little fog. The average horizontal visibility is 13.2 km, with a highest visibility of 45.6 km and a lowest visibility of 4.0 km.

4.1.4. Public Service Numbers

Fire: 119

Police: 110

Medical emergencies: 120

Traffic accidents: 122

Weather forecast: 121

Directory inquiries: 114

4.1.5. Other Information

Time zone: UTC+8

Voltage: 220V/50HZ

Currency: the legal tender is the renminbi (RMB), which is denominated in yuan. Currency exchange services are offered at most banks in China.

4.2. Key Facts and Figures

4.2.1. Dates

Dates: 26 June 2022 to 7 July 2022

Location: Chengdu, Sichuan, the People's Republic of China

4.2.2. Sports Programme

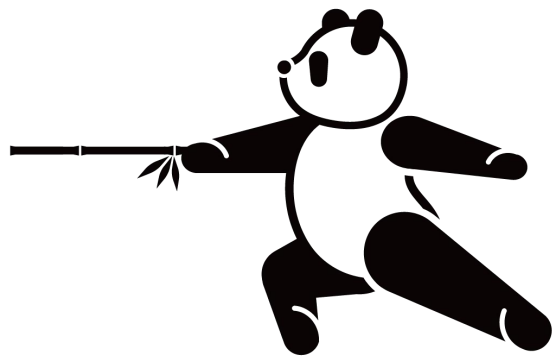
Sports: 18 sports (15 compulsory sports and three optional sports)

Events: 269 events

Venues: 49 venues, including the Opening Ceremony venue, 27 competition venues, 18 training venues and three warm-up venues.

4.2.3. Opening and Closing Ceremonies

- Opening Ceremony
Venue: Dong'an Lake Sports Park Stadium
Date: 20:00, 26 June 2022 (Sunday)
- Closing Ceremony
Venue: Chengdu Open Air Music Park
Date: 20:00, 7 July 2022 (Thursday)



5. Service Information





5. Service Information

5.1. Arrival and Departure

- a. All client groups can enter and exit China via Chengdu Shuangliu International Airport (the official port of entry). In addition, Chengdu Shuangliu International Airport, Chengdu Tianfu International Airport and Chengdudong Railway Station are set as the official points of arrival and departure with service desks where the staff of the 2021 FISU WUG will guide and assist the Customs clearance. Transportation services are available from the points of arrival and departure to the residence.
- b. To ensure the convenient and efficient arrival and departure services, participants are suggested to submit the arrival and departure information to the Organising Committee in a timely manner via FISU Online Accreditation System (OAS). In case of any change, please modify the information in time through the Delegation Attaché or the corresponding department.

5.2. FISU WUG Village

5.2.1. Overview

The FISU WUG Village is located on the campus of Chengdu University in east downtown Chengdu, taking up approximately 800,000 square metres. It is 46 kilometres southeast of Chengdu Tianfu International Airport, 26 kilometres southwest of Chengdu Shuangliu International Airport and 12 kilometres south of Dong'an Lake Sports Park Stadium. It is 45 kilometres from the competition venue for Fencing --Pidu Sports Centre Gymnasium Fencing Final Hall. The FISU WUG Village will open and accept check-in on 20 June 2022, and will close on 10 July 2022, operating for a total of 21 days. Both 5G and Wi-Fi are available across the village. The FISU WUG Village consists of the operational zone, an international zone, a residential zone and transportation areas.

* Please refer to the *FISU WUG Village Guide* for more information.

5.2.2. Operational Zone

The operational zone includes the following: the Welcome Centre, Village Pass Centre and Accreditation Centre. Bank services are provided in the Welcome Centre, where a waiting area with drinks and snacks is set.

5.2.3. International Zone

The international zone serves as an important communication platform for delegations. It includes the following facilities: flag plaza, Main Information Centre, Sport Information Centre, FISU Office and meeting rooms, polyclinic, doping control station, volleyball courts, basketball courts, athletic field, swimming pool, post office, mobile services, tourist information services, barber shop, dry cleaner, licensed product stores, souvenir stores, café, games room, dance club, internet café, cinema, religious centre, volunteer centre, education activities and exhibition centre, and cultural activities centre.

5.2.4. Residential Zone

The residential zone provides accommodation and dining services during delegations' stay in the FISU WUG Village. It consists of Zone A in the west, Zone B in the north and Zone C in the east (see the red zones in the FISU WUG Village Map). All three zones have access to the international zone. There is also the Resident Services Centre, delegation offices, medical rooms and laundry rooms in the residential zone. If you need bed extensions, please register at the Resident Services Centre.

5.2.5. Transportation Areas

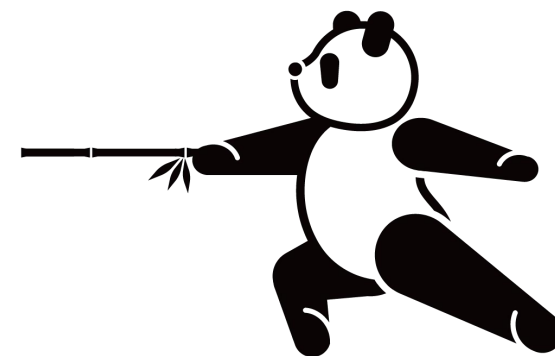
The transportation areas provide transportation services for delegations to and from competition and training venues and activity sites. They include the following: a transport mall, a parking lot and a vehicle motor pool.



FISU
WORLD
UNIVERSITY
GAMES
SUMMER



FISU WUG VILLAGE MAP (TBD)





5.3. Accreditation

5.3.1. Main Accreditation Centre

Name	Location	Address	Client Groups	Time of Operation
MAC	FISU WUG Village Welcome Centre	2025 Chengluo Avenue, Longquanyi District, Chengdu, Sichuan	Athletes and Officials of all countries/regions	18 June 2022 to 7 July 2022 (24 hours non-stop)

The MAC provides the following services:

- Confirm and correct accreditation information;
- Produce, issue and deliver accreditation cards;
- Re-issue lost/damaged accreditation cards;
- Revoke invalid cards;
- Handle accreditation-related issues;
- Provide technical support;
- Accommodation services;
- Cashier;
- FISU International Control Committee (CIC) reservation and control.

5.3.2. Accreditation Cards

Accreditation cards show the card holder's photo, name, title and access rights.

- Visitor Pass

The Visitor Pass gives visitors access to the FISU WUG Village on the indicated date. Only the Heads of Delegations or their representatives, FISU Family and the Organising Committee workforce can request visitor passes for Heads of Delegations or their representatives, FISU Family and Departments of the Executive Committee of the 2021 FISU WUG (Heads of Working Groups). Requests in advance are required when the delegation of the NUSF invites visitors (friends and families of athletes, officials and senior

management, etc.). Delegations should strictly follow the regulations on the number of visitors they are allowed to invite per day.

- Venue Access Code

The venue access code is a set of codes consisting of capitalised letters or special symbols that identify the venues that card holders can access.

There are three types of venue access codes:

- Single venue code: a set of letters for each venue. This venue code on the accreditation card gives access to the corresponding venue.
- Venue cluster code: a venue cluster consists of competition venues, training venues and non-sport venues in one secured area. The venue cluster code consists of a set of letters and is indicated on the accreditation card, giving access to the corresponding venue cluster.
- Special access code: "∞" or "ALL". The "∞" on the accreditation card gives access to all sport venues. "ALL" on the accreditation card gives access to all non-sport venues.

5.3.3. Lost or Damaged Accreditation Card Replacement

In case of any accreditation card lost or damage, the accredited person should immediately contact the Main Accreditation Centre for replacement according to the following procedures:

- Submit the replacement application

The accredited person should submit the replacement application at the Main Accreditation Centre with valid identity documents. If the accredited person cannot go to the Main Accreditation Centre in person, the delegation may authorise another member or attaché to submit the application.

- Collect the new card

Once produced, the new card shall be collected by the accredited person or the authorised person upon signing.

5.4. Transportation

5.4.1. Transportation for Competition and Training of Athletes and Delegation Officials



-Shuttle bus (Competition)

The OC will arrange the shuttle bus timetable according to the competition schedule, provide shuttle service between the FISU WUG Village and competition venues.

The schedule of the shuttle bus will reserve warm-up time upon arrival at the competition venue for athletes. Athletes and team officials can board the shuttle bus at the bus station located in the FISU WUG Village.

In circumstance that athletes and team officials miss the last bus departing from the competition venue after the game due to doping testing, press conferences or other external reasons, the executive committee will arrange vehicles to transport athletes and team officials back to FISU WUG Village from case to case.

-Shuttle bus (Training)

The executive committee will arrange the shuttle bus timetable according to the training schedule, provide shuttle service between the FISU WUG Village and the training venue on a regular frequency. Athletes can board the shuttle bus at the bus station located in the FISU WUG Village.)

5.4.2 Transportation for Opening and Closing

The Opening Ceremony will be held at Dong'an Lake Sports Park Stadium, about 20 minutes' drive from the FISU WUG Village while the Closing Ceremony will be held at Chengdu Open Air Music Park, about 25 minutes' drive from the FISU WUG Village.

The Organising Committee will provide dedicated bus services for athletes and delegation officials to and from the FISU WUG Village and the venues for the Opening Ceremony and the Closing Ceremony on 26 June and 7 July 2022 respectively.

Before the Opening/Closing Ceremony, the Organising Committee will assign vehicles transporting delegations to the opening/closing ceremony venue by delegations. The transportation information, including the pick-up time, vehicle details and pick-up point, will be sent to the delegations via their liaisons or assistants. All delegations are required to go through security check and arrive at the pick-up point 15 minutes before the pick-up time.

After the Opening/Closing Ceremony, delegations going back to the FISU WUG Village will be picked up at the designated points in the Opening/Closing Ceremony Venue. The delegation members may take any bus with unoccupied seats. A bus will depart once it is full. Please refer to the Transportation Manual for the pick-up points after the ceremonies.

5.4.3 Transportation for Spectating Delegation Members

Spectating athletes will be provided with spectating buses to and from between the FISU WUG Village and the competition venues. The bus will depart from the Transport Mall in FISU WUG Village once it is full regardless of nationalities and participating sports of the passengers. The spectating athletes should get off the bus outside the security perimeter (to be confirmed) and walk into the venue with their accreditation card or ticket. If the athletes want to watch the competition of any sport, they can go to the venue by taking the shuttle buses for the competition of such sport.

5.4.4 Delegation Cars

- Assignment and USE

Delegation cars with drivers will be provided for the athletes and officials of each delegation according to the delegation size on the principles specified in the following table:

Delegation Size	Assigned Vehicle
5-24	1
25-49	2
50-99	3
100-149	4
150-199	5



Delegation Size	Assigned Vehicle
200-249	6
250-299	7
Over 300	8

After the athletes and delegation officials collect their accreditation cards in the FISU WUG Village, the HoD or his/her designated personnel can sign the vehicle use agreement at the Information Desk of the Department of Transportation in the Main Information Centre. Upon the signing of the agreement, the delegation will be entitled to use the delegation cars. The liaison of a delegation will be informed of such vehicle details as the license plate number, parking position and driver's contact for the convenience of athletes and delegation officials to make reservations.

- Service Policy

The delegation cars will be available between 07:00 and 23:00 from 20 June to 10 July 2022. The athletes and delegation officials requesting the delegation cars should make reservations three hours in advance via the delegation liaison or by filling in the transportation information on the 2021 FISU WUG Transportation APP. The delegation cars should only be used within the service hours. Only the drivers assigned by the transportation service provider are allowed to drive the delegation cars.


5.5. Food and Beverages


5.5.1. Main Dining Hall

Athletes restaurant No. 1 and No. 2 are respectively located near the residential area A and C of the FISU WUG Village, with a total floor area of 17,000 square meters. A total of 4,340 seats are available in the restaurants with a separate halal kitchen and dining area. The hours of operation are as follows:

Date (June 2022)	Breakfast	Lunch	Dinner	Late-night Dinner
19-20 June	06:30-09:30	11:00-14:00	18:00-21:00	
21 June-7 July (20 hours non-stop service per day)	05:00-10:00 (06:30-9:30 All cuisines served)	10:00--16:00 (11:00-14:30 All cuisines served)	16:00--22:00 (17:30-21:00 All cuisines served)	22:00--01:00 (22:30-24:00 All cuisines served)
8 July-9 July	07:00-09:30	11:00-14:00	18:00-21:00	
10 July	07:00-09:30			

This timetable is subject to changes.

Accreditation cards with  symbol give unlimited access to the athletes' dining halls. A valid voucher will be required to access the

dining halls. If there is no  symbol on the accreditation card, then no food is allowed to be taken out of the dining halls unless otherwise specified.

5.5.2. Menu

The athletes' dining halls offer hot dishes including Chengdu, Mediterranean, European, Asian and Halal cuisines. The menu of hot meals varies on a daily basis, with a rotation of seven days. Cold dishes, room temperature food, dishes cooked over open hearths and



cold and hot drinks are available. Alcoholic drinks or fresh juice are not served in the dining halls.

Each dish is served with a food description card in Chinese and English.

5.6. Medical Care

5.6.1. Overview

City-wide medical resources are coordinated to establish a full-process medical service system integrating on-site treatment, emergency transfer, emergency treatment and inpatient treatment and covering all competition and training venues, the FISU WUG Village, the Main Media Centre and official hotels to meet the needs of athletes, TOs, FISU Family, media, staff, and volunteers. The Polyclinic in the FISU WUG Village provides 24-hour medical services.

Free medical services including on-site treatment, emergency transfer and inpatient treatment of acute diseases will be provided for all accredited personnel during the 2021 FISU WUG from 20 June to 10 July 2022. The fee exemption is only applicable to the expenses incurred in China.

Smoking is not allowed in all venues, indoor spaces in the FISU WUG Village, public transportation vehicles, and outdoor spaces other than the designated smoking areas.

5.6.2. Polyclinic

The Polyclinic consists of 16 departments and wards, including emergency, medicine, surgery, orthopaedics and traumatology, sport medicine, dermatology, gynaecology, stomatology, ENT(Ear, Nose and Throat), ophthalmology, imaging (CT, X-ray, colour ultrasound), electrocardiogram, iatrophysics and rehabilitation, a laboratory, a pharmacy and a fever and bowel clinic with isolation rooms. Medical services are provided by the medical staff of the Polyclinic. Medical services are available from 08:00 to 23:00 while first aid and emergency transfer services are available 24 hours a day.

5.6.3. Medical Services in Venues

Competition Venues	Equipped with medical rooms, FOP first-aid points and first aid points for spectators to provide on-site treatment
	Equipped with an ambulance to transfer the patients demanding further treatment to the designated hospital
	Each medical room (first aid point) is staffed with a doctor and a nurse
	Each medical room (first aid point) is equipped with first aid medicine and equipment
Training Venues	Open one hour prior to competitions and close one hour after competitions or until the last athlete leaves
	Equipped with medical rooms to provide on-site treatment
	Equipped with an ambulance to transfer the patients demanding further treatment to the designated hospital
	Staffed with a doctor and a nurse
	Equipped with first aid medicine and equipment
	Open half an hour prior to training and close half an hour after training

On-site treatment and emergency transfer services are provided for all accredited personnel in the venues.

5.6.4. Hospitals for the Games

The hospitals for the Games, including nearby hospitals and designated hospitals, are equipped with green channels and dedicated beds to provide medical services for accredited personnel of the 2021 FISU WUG.

5.6.4.1. Nearby Hospitals

Nearby hospitals are assigned for the competition venues, the Polyclinic, the Main Media Centre, official hotels and venues of opening and closing ceremonies and other important activities and



sites. The selection of such hospitals are based on the venue location and the service capacity of the hospitals. The athletes and other personnel are transferred to a nearby hospital for initial treatment as determined by the on-site medical staff.

The Organising Committee staff can be hospitalised in a nearby hospital; spectators in venues are transferred to the appropriate medical institution for treatment through the public emergency medical service system of Chengdu.

5.6.4.2. Designated Hospitals

The athletes or other personnel who need further inpatient treatment as determined by the on-site medical staff or the nearby hospital after the initial treatment will be transferred to a designated hospital.

- Designated Hospitals

Hospital	Client Groups
Chengdu Integrated Traditional Chinese Medicine and Western Medicine Hospital West China Hospital, Sichuan University	FISU Family/OC VIP
Chengdu Third People's Hospital	Technical Officials
Chengdu Second People's Hospital (Longtan Zone)	Media
Polyclinic Affiliated Hospital of Chengdu University	Athletes
Chengdu Public Health Clinical Medical Centre	COVID-19 patients

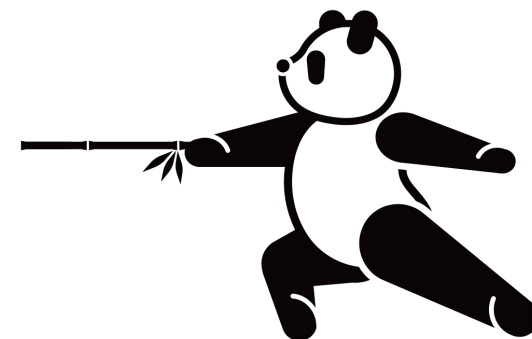
5.7. Ticketing

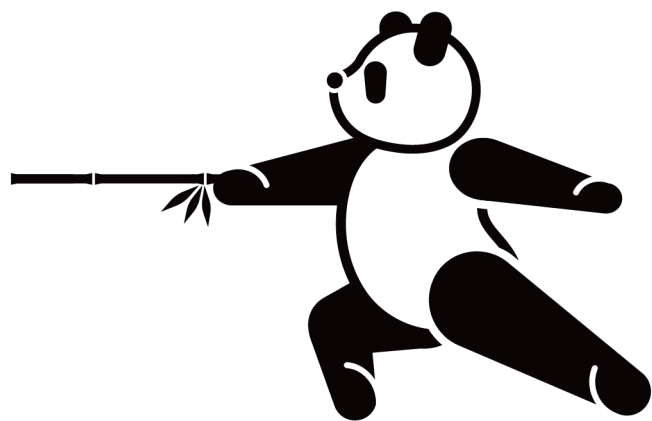
Dedicated seating areas will be reserved for athletes and technical officials at the competition venues. Athletes and technical officials can enter these seating areas by presenting their accreditation cards.

5.8. Climate and Weather

From three days before the first Fencing match until the end of the last match, the competition venue weather forecast for the following 24 hours will be reported every day at 08:00 am, including the temperature, air pressure, relative humidity, wind speed, wind direction and precipitation.

Please refer to *the weather service manual* for more information.





6. Competition Information





6. Competition Information

6.1. Technical Committee

In accordance with Article 3.6.1 of the Regulations for the Chengdu 2021 FISU World University Games, a Technical Committee for Fencing is set up, which consists of:

FISU Fencing TCC	KRALIK Julius (SVK)
FIE Technical Delegate	TBD
Chinese Fencing Association Technical Delegate (NF TD)	ZHU Yina (CHN)
OC Representative (Sport Manager)	FU Zhonglue (CHN)

No more than two members of the Technical Committee should be of the same nationality, not including the FISU TCC.

6.2. Technical Regulations

6.2.1. The Fencing events will be organised in accordance with the most recent technical regulations of the Fédération Internationale d'Escrime (FIE). In case of disagreement in the interpretation of these rules, the French text will be regarded as authoritative.

6.2.2. The programme and duration of the competitions will be fixed by the FISU Executive Committee in agreement with the OC and the FISU WUG Summer ITC. In principle, the programme shall last six days and include the following events:

a. Individual events

Men	Women
Epée	Epée
Foil	Foil
Sabre	Sabre

b. Team events

Men	Women
Epée	Epée
Foil	Foil
Sabre	Sabre

Each country is authorised to enter twenty-four athletes, with four athletes in each weapon.

For the individual competitions, a country can enter a maximum of four athletes for each weapon.

For the team competitions, each country can enter only one team for each weapon. Each participating team is made up of a maximum of four athletes and a minimum of three.

At the first General Technical Meeting, the HoD or his/her representative shall confirm and sign the official list of athletes.

Any entry not duly confirmed at the first General Technical Meeting, will not be taken into consideration except for force majeure.

6.2.3. Advanced payment

Two months before the opening ceremony of the FISU World University Games, countries/regions entering Fencing must confirm their participation with an advanced payment of 50% of the participation fees per entered athlete and official.

The advanced payment shall be directly collected by the OC.



6.2.4. Seeding

Fencers participating in the individual competitions are preliminarily seeded by taking account of the updated FIE Official Ranking and by drawing lots among any fencers who are not in the ranking. For team events, teams will be seeded based on the results of their team members in the individual competitions. The three best results will be added up to determine the seed in that particular weapon. The team with the smallest sum will become number one, also, all places up to 8th place will be fought for. Fencers not participating in the individual competition of a discipline will receive a number equal to the total of participants in the respective individual event plus one.

6.3. Competition Format

a. Individual Events

The preliminary round of competition will run by pools. The initial order of fencers will be established according to the updated FIE Official Ranking, available at www.fie.org/results-statistic/ranking. If there are fencers qualified who do not appear in the FIE Official Ranking, and/or if there are fencers equally ranked in the FIE Official Ranking, the DT will carry out a preliminary drawing of lots by PC as follows:

A drawing of lots for any fencers equally ranked.

A drawing of lots for any fencers who do not appear in the FIE Official Ranking. Each pool will be arranged on the same piste, and composed of six to seven fencers who will fence each other (three minutes, five hits). One of the fencers who has scored five hits first or has scored a greater number of hits if when the time limit expires will be declared the winner. 20% - 30% in the pools will be eliminated, and then the other fencers will advance to the direct eliminations.

b. Team Events

At each weapon teams consist of three fencers, with or without one optional substitute. The competition is run by integral direct elimination with a direct elimination table, which may be incomplete.

The qualified teams will be placed in the table by the results of Individual events according to the most recent rules of FIE. All places in the table up to 8th place are fought for. From 9th place onwards teams are classified, within each round of the table, according to their initial place in the table.

Non-combativity will be governed by the FIE rules.

6.3.1. Competition procedures

- 1) Warm-up
- 2) Roll call
- 3) Competitions
- 4) Signing on the competition record by the fencers (only after pools)
- 5) Leaving the Field of Play (FOP)

6.4. Sport Entries and Eligibility

- 6.4.1. Only delegations with athletes will be approved as official delegations participating in the FISU World University Games. (cf. Article 5.2 of the Regulations for the Chengdu 2021 FISU World University Games)

Entry Deadlines

Form	Deadline
Intention of Participation Form (PI)	Closed
General Entry Form (G)	26/10/2021
Quantitative Entry Form (Q)	26/02/2022
Individual Entry Form (I)	26/05/2022
Final Confirmation of athletes and referees	General Technical Meeting

Entry Requirements:

- Intention of Participation, General, Quantitative, Nominative and Individual entries shall be submitted through the FISU Online Accreditation System in order to meet the required entry deadlines. ITOs entries shall reach the OC in accordance with the set procedure and deadlines.



- Entries submitted after the required deadlines will not be taken into consideration, except in the event of force majeure. Late entries will be kept on a reserve list and evaluated by FISU case by case.
- Individual entry forms of athletes from a non-Member Association must be countersigned by the NF or by the NOC. The NF of the concerned sport or the NOC has to submit an official request to FISU General Secretariat. Upon approval FISU will provide them an access to the FISU Online Accreditation System.

6.4.2. Eligibility

The CIC shall be responsible for controlling the eligibility of athletes and accreditation of delegations, officials and athletes at the FISU World University Games;

At the individual entry deadline, one month prior to the opening ceremony of the FISU World University Games, the CIC shall verify and validate the documents submitted by the delegations in the FISU Online Accreditation System to justify, in particular:

- the authenticity of the national entries (cf. Article 1.5 of the Regulations for the Chengdu 2021 FISU World University Games)
- the academic status of the athletes (cf. Article 5.2.2 and 5.2.3 of the Regulations for the Chengdu 2021 FISU World University Games)
- the nationality and age of the athletes (cf. Article 5.2.4 of the Regulations for the Chengdu 2021 FISU World University Games)

6.5. Competition and Training Venues

Venue	Function	Spectator Capacity	Distance from FISU WUG Village	
			Journey time	Distance
Pidu Sports Centre Gymnasium Fencing Final Hall	Competition	3000	50min	45km
Pidu Sports Centre Gymnasium Fencing Preliminary Hall	Competition	960	50min	45km
Pidu Sports Centre Gymnasium Fencing Warm-up Hall	Competition	/	50min	45km
Pidu Sports Centre Gymnasium Fencing Training Hall	Training	/	50min	45km

6.6. Competition Schedule

Date	Time	Event	Venue
26 June 2022	09:00	Women's Epée Individual Weapon Control Men's Foil Individual Weapon Control	

Date	Time	Event	Category	Phase/Round	Venue	
27 June 2022	08:30	Women's Sabre Individual Weapon Control Men's Epée Individual Weapon Control				
	08:30-09:15	Warming-up				
	09:30	Epée	W	Preliminary round		
	11:45	Foil	M	Preliminary round		
	11:50	Epée	W	Direct elimination of 64		
	13:05	Epée	W	Direct elimination of 32		
	14:00	Epée	W	Direct elimination of 16		
	14:15	Foil	M	Direct elimination of 64		
	14:55	Epée	W	Quarter-Final		
	15:15	Foil	M	Direct elimination of 32		
	16:15	Foil	M	Direct elimination of 16		
	17:15	Foil	M	Quarter-Final		
	18:30	Epée	W	Semi-Final		
	19:10	Foil	M	Semi-Final		
	19:50	Epée	W	Final		
20:15	Foil	M	Final			
Followed by	Awarding ceremony (after finals)					



Date	Time	Event	Category	Phase/Round	Venue
28 June 2022	08:30	Women's Foil Individual Weapon Control Men's Sabre Individual Weapon Control			
	08:30-09:15	Warming-up			
	09:30	Epée	M	Preliminary round	
	12:00	Epée	M	Direct elimination of 128	
	12:35	Epée	M	Direct elimination of 64	
	13:00	Sabre	W	Preliminary round	
	13:50	Epée	M	Direct elimination of 32	
	14:30	Sabre	W	Direct elimination of 64	
	14:45	Epée	M	Direct elimination of 16	
	15:15	Sabre	W	Direct elimination 32	
	15:40	Epée	M	Quarter-Final	
	16:30	Sabre	W	Direct elimination of 16	
	17:15	Sabre	W	Quarter-Final	
	18:30	Epée	M	Semi-Final	
	19:10	Sabre	W	Semi-Final	
	19:40	Epée	M	Final	
	20:05	Sabre	W	Final	
	Followed by	Awarding ceremony (after finals)			

Date	Time	Event	Category	Phase/Round	Venue
29 June 2022	08:30-09:15	Warming-up			
	09:30	Foil	W	Preliminary round	
	11:50	Foil	W	Direct elimination of 64	
	12:50	Foil	W	Direct elimination of 32	
	13:00	Sabre	M	Preliminary round	
	13:50	Foil	W	Direct elimination of 16	
	14:20	Sabre	M	Direct elimination of 64	
	14:40	Foil	W	Quarter-Final	
	15:20	Sabre	M	Direct elimination of 32	
	16:35	Sabre	M	Direct elimination of 16	
	17:20	Sabre	M	Quarter-Final	
	18:30	Foil	W	Semi-Final	
	19:10	Sabre	M	Semi-Final	
	19:40	Foil	W	Final	
	20:00	Sabre	M	Final	
	Followed by	Awarding ceremony (after finals)			



Date	Time	Event	Category	Phase/Round	Venue	
30 June 2022	08:30-09:15	Warming-up				
	09:30	Team Epée	W	32 for 16		
	09:30	Team Foil	M	16 for 8		
	10:50	Team Epée	W	16 for 8		
	10:50	Team Foil	M	Quarter-Final		
	12:10	Team Epée	W	Quarter-Final		
	12:10	Team Foil	M	Semi-Final + 5 to 8		
	13:30	Team Epée	W	Semi-Final + 5 to 8		
	13:30	Team Foil	M	5 to 8 places		
	15:00	Team Epée	W	For 3rd and 4th		
	16:00	Team Foil	M	For 3rd and 4th		
	17:00	Team Epée	W	Final		
	18:00	Team Foil	M	Final		
	Followed by	Awarding ceremony (after finals)				

Date	Time	Event	Category	Phase/Round	Venue
1 July 2022	08:30-09:15	Warming-up			
	09:30	Team Epée	M	32 for 16	
	10:45	Team Epée	M	16 for 8	
	11:00	Team Sabre	W	32 for 16	
	12:00	Team Epée	M	Quarter-Final	
	12:00	Team Sabre	W	16 for 8	
	13:00	Team Sabre	W	Quarter-Final	
	13:15	Team Epée	M	Semi-Final + 5 to 8	
	14:00	Team Sabre	W	Semi-Final + 5 to 8	
	14:30	Team Epée	M	5 to 8 places	
	15:00	Team Sabre	W	5 to 8 places	
	15:00	Team Epée	M	For 3rd and 4th	
	16:00	Team Sabre	W	For 3rd and 4th	
	17:00	Team Epée	M	Final	
	18:00	Team Sabre	W	Final	
Followed by	Awarding ceremony (after finals)				



Date	Time	Event	Category	Phase/Round	Venue
2 July 2022	08:30-09:15	Warming-up			
	09:30	Team Foil	W	16 for 8	
	10:50	Team Foil	W	Quarter-Final	
	11:00	Team Sabre	M	32 for 16	
	12:00	Team Sabre	M	16 for 8	
	12:10	Team Foil	W	Semi-Final + 5 to 8	
	13:00	Team Sabre	M	Quarter-Final	
	13:30	Team Foil	W	Places 5 to 8	
	14:00	Team Sabre	M	Semi-Final + 5 to 8	
	15:00	Team Sabre	M	Places 5 to 8	
	15:00	Team Foil	W	For 3rd and 4th	
	16:00	Team Sabre	M	For 3rd and 4th	
	17:00	Team Foil	W	Final	
	18:00	Team Sabre	M	Final	
	Followed by	Medal ceremony (After the Finals)			

6.7. Training Schedule

The training is scheduled at 09:00-19:00 from 22 June to 2 July 2022, with five time slots per day, two hours for each. Under the booking system, each time slot is available for a maximum of 11 delegations, which means 55 delegations can participate in training each day.

6.8. Technical Meetings

Date	Time	Subject	Venue
2022-06-25	10:00	Venue Inspection	Pidu Sports Centre Gymnasium
2022-06-26	09:00	First Technical Committee Meeting	Pidu Sports Centre Gymnasium
	09:30	General Technical Meeting	Pidu Sports Centre Gymnasium
	11:00	Referees Meeting	Pidu Sports Centre Gymnasium
2022-07-02	19:00	Final Technical Meeting	Pidu Sports Centre Gymnasium

Note: Technical Meetings schedule may be subject to changes.



- 6.8.1.** There shall be a Technical Committee for each sport in the programme of a FISU World University Games, which shall consist of:
- at least one FISU TCC who shall be a member of the FISU World University Games Summer ITC for the sport concerned;
 - one representative of the OC for the sport concerned;
 - the Technical Delegate of the appropriate NF of the organising country;
 - the Technical Delegate of the appropriate IF;
 - additional experts who may be appointed to assist the Technical Committee as appropriate.

The Technical Committee will be assisted in its work by adequate personnel.

The OC shall appoint one administrative secretary to the Technical Committee who shall take the minutes of all meetings.

No more than two members of the Technical Committee should be of the same nationality, not including the FISU TCC.

- 6.8.2.** Three days prior to the start of the sports events for which he/she is responsible, the FISU TCC shall convene the following meetings:
- the meeting of the Technical Committee, which the staff members of the OC for the sport concerned may also attend as observers;
 - the first General Technical Meeting, to which the members of the Technical Committee and a representative from each country competing in the sport concerned shall be invited.
- 6.8.3.** The First Technical Committee Meeting shall:
- Prepare the first General Technical Meeting;
 - define the criteria to set up a jury of appeal (if appropriate according to the rules and regulations of FIE);
 - decide on the appointment system for Technical Officials;
 - approve the detailed programme for the sport;
 - propose the nomination of additional experts to assist the Technical Committee as appropriate.

- 6.8.4.** The General Technical Meeting shall:
- approve the competition and training schedules for Fencing;
 - appoint a jury of appeal (if appropriate) according to FIE;
 - take, if necessary, the emergency measures in order to ensure the smooth technical running of the events;
 - confirm the official list of the athletes who will take part in the competitions. The HoD or his/her representative shall confirm the attendance of their country's athletes for the sport concerned by signing the said list and, if required, by filling in an entry form. No changes shall be made to the list after the General Technical Meeting. Exceptions shall only be permitted if stated in the technical regulations of the sport concerned.
- This entry form shall contain the accreditation card number attributed to the participant by the CIC, the given name, the family name and the athlete's number.
- The athletes that are not approved by the CIC will not be authorised to take part in the competition.

6.9. Technical Officials

6.9.1. Nomination

All ITOs are nominated by FIE and approved by the FISU Fencing TCC. These ITOs must be invited by the OC no less than three months prior to the opening ceremony of the FISU World University Games. In addition, FIE will nominate 5 Technical Officials to join the Technical Sub-Committee for Fencing. The OC and the NF will assign NTOs to complement the team of technical officials required for Fencing. Following the technical regulations of each particular sport, ITOs are entitled to receive a per diem in the amount established in the FISU-ISF partnership agreement for the entire days of duty (including travel days). Participating teams must pay an ITO contribution fee to the OC in order to cover the cost (travel expenses, accommodation, full board and the per-diem according to the FISU-FIE partnership agreement) of the ITOs from FIE according to the pro-rata of athletes registered.



The fixed ITO contribution fees per athlete/team participating in the concerned sport are indicated in Article 4.4.2 of the Regulations for the Chengdu 2021 FISU World University Games.

The cost (travel expenses, accommodation, full board and the per-diem according to the FISU-FIE partnership agreement) of the Technical Sub-Committees members is to be borne by the OC.

6.9.2. Number of Technical Officials

There shall be 38 ITOs:

- 6 ITOs for the Technical Committee (5 ITOs to be nominated by FIE and 1 by the NF);
- 24 international referees (to be nominated by FIE);
- 8 domestic referees (to be nominated by the NF and approved to FIE)

All referees must have an active FIE license (i.e., must have refereed an international competition in the previous two years).

The number of NTOs shall be agreed between the OC and the FISU TCC.

6.10. Protest and Appeals

During the FISU World University Games, protests of a non-technical nature as allowed in article 3.2.2. d) of the Chengdu 2021 FISU World University Games Regulations shall be presented to the FISU President or Secretary General/CEO, by the HoD or his/her deputy in writing no later than six hours after the incident, and no protest received after this time shall be considered. Each protest shall be accompanied by a deposit of EUR 50, which shall be returned only if the protest is considered justified.

6.10.1. All decisions taken by the FISU Executive Committee are final.

6.10.2. To challenge the eligibility of an athlete from another country, the HoD must make a written protest to the FISU Executive Committee. The CIC shall be authorised to investigate the eligibility of the participant concerned. Only the HoD, or his/her deputy, shall be authorised to make such a protest.

6.10.3. Any protest of a sports or disciplinary nature must reach the Jury or other competent authority, according to the regulations laid down by FIE.

Such protest must be accompanied by a deposit, the amount of which is set in line with the FIE regulations, if not otherwise specified in the technical regulations of the concerned sport (cf. Sport Regulations).

6.10.4. Each HoD or his/her deputy is authorised to lodge an appeal against the decision of the Jury.

This appeal must be submitted in writing to the Jury of Appeal or competent authority in accordance with the FIE regulations.

6.10.5. Any decision of the Jury of Appeal or equivalent authority of a sport is final and must be reported immediately to the HoD of the country concerned.

Any sport disciplinary situation, which cannot be satisfactorily resolved by the sport technical committee and the sport-specific disciplinary regulations, will be reported to the FISU Disciplinary Committee for further action to be taken.

Where appropriate, a report will also be sent to FIE.

6.11. Late-Athlete Replacement Policy

The OC has the right to charge countries/regions not meeting the Individual Entry deadline an additional late-entry fee of EUR 200 for each participant entered after the entry deadline. Late entries will only be accepted in special circumstances and with the approval of FISU.

In the event that an athlete gets injured or ill, the late-athlete replacement policy applies.

6.12. Equipment and Uniforms

The equipment for Fencing competition of 2021 FISU WUG is provided by the OC. All equipment must be homologated by FISU and FIE. The sport uniform and equipment must comply with the latest regulations of FIE. The French, English and Spanish versions are available on www.fie.org.



6.13. Doping Control

6.13.1. Overview

Doping control (in and out of competition) during the Chengdu 2021 FISU World University Games will be strictly conducted in accordance with the FISU Anti-Doping Regulations and the 2019 World Anti-Doping Code to ensure a fair competition and promote sound sportsmanship. Doping control will begin from the official opening date of the FISU WUG Village until the end of the Games.

Participating athletes must abide by relevant regulations and follow given guidelines when they have been selected and notified for testing. Any athlete who refuses to undergo testing, or interferes with the testing process, will be considered to have committed a doping violation and be subject to disciplinary action.

6.13.2. Doping Control Station (DCS)

Doping control stations are designed in accordance with WADA and FISU regulations. Samples for testing are collected in the Doping Control Station of each competition venue as well as at the Doping Control Centre (Doping Control Station) located within the FISU WUG Village.

6.13.3. Athlete Selection

FISU Medical Committee will select athletes based on rank in a competition at random and will do target testing.

6.13.4. Escorting Persons

Athletes will be notified and escorted by at least one chaperone as needed.

6.13.5. Report to Doping Control Station

The athlete must report to the Doping Control Station in a reasonable amount of time from selection. The athletes will be allowed to attend award ceremonies, press conference, etc., as long as they remain under supervision of his/her chaperone/s.

6.13.6. Sample Collection

Athletes selected for testing will be notified immediately following the competition and will be under constant visual supervision by a chaperone until they enter the Doping Control Station. At the station, sample (urine and/or blood) will be collected in a vessel, then sealed and submitted for transportation to the WADA approved laboratory under the supervision of a Doping Control Officer.

6.13.7. Athletes' Obligations

- a. The athletes must have their Accreditation with them at all times.
- b. The athletes must report all medications taken in the prior week (including nutrition supplements, minerals, vitamins, etc.).
- c. athletes must present their TUE Document if they have one.

6.13.8. Testing Organisation and Results

The collected sample will be tested in the laboratory within 48 hours and results will be directly communicated to the FISU Medical Committee Chair. Athletes who are tested positive in the doping test may be disqualified and subject to disciplinary action.

6.13.9. Additional Controls

A team may request for doping control tests to be performed on an athlete who has not been selected for doping control.

Examples of indications for this request are for National Records, or Target Testing. These athletes must complete the "FISU Doping Control Request Form". They will then be escorted to the Doping Control Station for sample collection and testing. The testing fee shall be borne by the applying unit. The results will be managed by FISU or appropriate national organisation.

Price List for Anti-Doping Analyses of Urine and Blood Samples (tbc by FISU)



Urine (routine items)	RMB	Note
Urine (test U)	1800.00	If no abnormal reaction, the test report will be issued within 10 working days upon receiving sample
Urine (test ESAs)	2300.00	If no abnormal reaction, the test report will be issued within 10 working days upon receiving sample
Urine (test hGHrf)	1500.00	If no abnormal reaction, the test report will be issued within 10 working days upon receiving sample
Blood (test hGH)	1500.00	If no abnormal reaction, the test report will be issued within 10 working days upon receiving sample

Payment method: please pay in the Doping Control Station of the Medical Centre in the FISU WUG Village.

6.14. Awards and Medals

A grand and solemn medal ceremony will be held after each competition.

6.14.1. Medal ceremony

- The awarded athletes in each event must attend the Medal-Awarding Ceremony.
- 10 minutes prior to the ceremony, the medallists will be ushered to the waiting area by the venue sport team coordinator. In case of a no show of medallists, the medals and mascots are delivered to the relevant HoD or appointed delegate.
- The medallists are expected to mount the podium in the official team uniforms. However, they are allowed to attend the official ceremony wearing sports uniforms when the ceremony takes place immediately after the competition. The medallists are not allowed to take any national flags or any other national, cultural or religious symbols on the podium. They must not wear hats, caps or sunglasses on the podium.

d. The national flag or flag of the Games will be raised for medallists and the FISU anthem will be played. Medallists and relevant officials should face the flags while they are being raised and the FISU anthem is being played.

e. After the flag-raising ceremony, medallists are expected to take photos with award presenters and then with other medallists.

f. After photos are taken, the medalists shall proceed to the mixed zone for interview and then escorted by the venue sport team staff.

Any dispute regarding protocol is resolved by the persons in charge of Protocol within FISU.

6.14.2. Medals and Mascot

a. A gold medal, a silver medal, and two bronze medals in Individual competitions will be awarded. A gold medal, a silver medal, and a bronze medal in Team competitions will be awarded.

b. The medalists will also receive mascots on the podium.

6.14.3. Diploma

Diplomas will be awarded in accordance with the FISU Protocol.

Please refer to Art. 6.2.2 of the Chengdu 2021 FISU World University Games General Regulations.

6.15. Media Interviews

Media centres are set up in all competition venues to facilitate interviews and reports by the accredited media.

After the competitions, all athletes must exit the field of play through the mixed zone, where they will be interviewed by the media.

Athletes will be guided by the press conference room staff to attend the press conference after the awarding ceremony.

All press conferences will be supported with English and Chinese interpreting services.

6.16. Timing and Scoring

Fill in according to suppliers' equipment list provided by the



Department of Information Technology of 2021 FISU WUG.

6.17. Results

Available at the official website and the Sport Information Centre (SIC).

6.18. Sport Information Services

Official website: <https://www.2021chengdu.com/cn/>

Sport Information Centre:

18 Sport Information Desks will be set up during 2021 FISU WUG to provide information efficiently to delegations and team officials visiting the SIC. SIC is located on the ground floor of the International Zone of the FISU WUG Village and will provide the following information and services for delegations during the Games:

- Competition schedule
- Training schedule
- Training booking information
- Start lists
- Competition results
- Weather information
- Inquiry and printing of information from Sport Information System terminal
- Technical meetings information
- Distribution of Diploma of Honour and Diploma of Merit.

Opening hours of SIC:

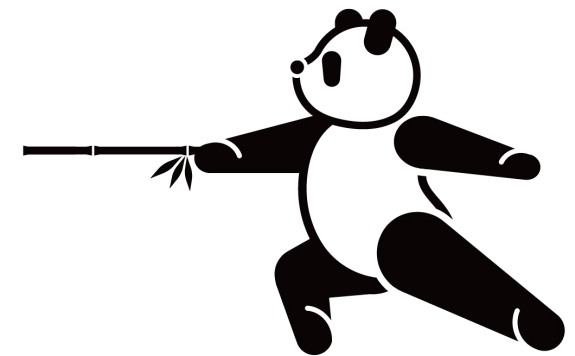
07:00 to 22:00 from 20 June 2022 to 10 July 2022 (21days).

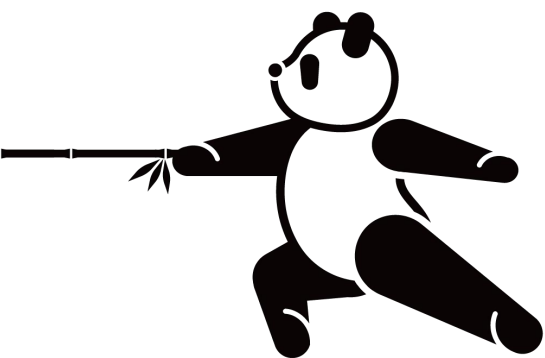
Sport Information Desk:

Sport Information Desks are set up at all competition venues to provide the following information and services for delegations during the Games:

- Competition schedule
- Training schedule
- Start lists
- Competition results
- Technical meetings information

Operation hours of Sport Information Desks in the venues may vary according to the sport programme of competition venues. It will open one hour before the first match of the day and close one hour after the last match.





7. Transportation Schedule



7. Transportation Schedule (tbc)

The bus service timetable of per sport will be arranged according to the competition schedule. The departing time and departing frequency will be scheduled on a daily basis depend on the traits of event and venue operation time on that day. The first bus will arrive at the competition venue in advance of the first event on that day. The specific depart timetable to be determined.

8. Appendices





8.1. Competition Schedule

CHENGDU 2021		FISU WORLD UNIVERSITY GAMES SUMMER		FISU		Chengdu 2021 FISU World University Games Competition Schedule														26 June – 7 July 2022	
Event	Date	Comp. Days	Sat.	Sun.	Mon.	Tue.	Wed.	Thu.	Fri.	Sat.	Sun.	Mon.	Tue.	Wed.	Thu.	Medal Events	Final Venue				
			25 Jun	26 Jun	27 Jun	28 Jun	29 Jun	30 Jun	1 Jul	2 Jul	3 Jul	4 Jul	5 Jul	6 Jul	7 Jul						
			Day -1	Day 0	Day 1	Day 2	Day 3	Day 4	Day 5	Day 6	Day 7	Day 8	Day 9	Day 10	Day 11						
Opening / Closing Ceremonies																					
Archery	5					●	●	●	●	●	●					10	Shuangliu Modern Pentathlon Centre Equestrian Arena				
Artistic Gymnastics	5					●	●	●	●	●	●					14	Dong'an Lake Sports Park Multi-Purpose Gymnasium				
Athletics	6							●	●	●	●	●	●	●		50	Shuangliu Sports Centre Stadium				
Badminton	8				●	●	●	●	●		●	●	●	●	●	6	Shuangliu Sports Centre Gymnasium				
Basketball	10		●	●	●	●	●	●	●	●	●	●	●			2	Fenghuangshan Sports Park Gymnasium				
Diving	8			●	●	●	●	●	●	●	●	●				15	Jiayang Cultural and Sports Centre Gymnasium				
Fencing	6			●	●	●	●	●	●	●	●					12	Pidu Sports Centre Gymnasium				
Judo	4					●	●	●	●	●						16	Jiayang Cultural and Sports Centre Gymnasium				
Rhythmic Gymnastics	3			●	●	●										8	Chengdu Sport University Gymnasium				
Rowing	3							●	●	●						15	Sichuan Water Sports School				
Shooting Sports	5			●	●	●	●	●	●							18	Chengdu Shooting Sport School				
Swimming	7			●	●	●	●	●	●	●	●					42	Dong'an Lake Sports Park Aquatics Centre				
Table Tennis	8			●	●	●	●	●	●	●	●	●				7	Hi-tech Zone Sports Centre Gymnasium				
Taekwondo	7			●	●	●	●	●	●	●	●					23	Wangjiang Campus Gymnasium, Sichuan University				
Tennis	9			●	●	●	●	●	●	●	●	●	●			7	Sichuan International Tennis Centre				
Volleyball	11		●	●	●	●	●	●	●	●	●	●	●	●		2	Xipu Campus Gymnasium, Southwest Jiaotong University				
Water Polo	13	●	●	●	●	●	●	●	●	●	●	●	●	●	●	2	Shuangliu Modern Pentathlon Centre Swimming and Fencing Hall				
Wushu	4			●	●	●	●									20	Chengbei Gymnasium				
Number of Medal Events Per Day					17	21	29	41	28	50	34	20	21	7	1	269					
Number of Sports Per Day			1	3	12	13	16	17	16	14	12	8	6	3	1						

Chengdu Makes Dreams Come True

Chengdu Makes Dreams Come True

●	Competition Day
●	Number of Medal Events