

CHALLENGE MONAL

#Monal

www.monal.ffescrime.fr



CHALLENGE MONAL

FIE WORLD CUP IN MEN'S EPEE, INDIVIDUAL AND TEAMS

15-17/04/2022

Dear friends,



It is with great pleasure that I invite you to the Challenge Monal on behalf of the French Fencing Federation, which will be held at Paris from the 15th to the 17th of April 2022 at Coubertin Stadium. Detail of the competition as follows.

Warm regards,
Bruno GARES
Président

ORGANIZER

Fédération Française d'Esgrime
7, porte de Neuilly
93160 NOISY-LE-GRAND
contact@ffescrime.fr / + 33 1 87 12 30 00
www.ffescrime.fr



 www.facebook.com/ffescrime
 www.twitter.com/ffescrime
 www.instagram.com/ffescrime
 www.youtube.com/ffescrime

SCHEDULE OF THE COMPETITION

WEDNESDAY – COVID-19 TESTS

- 12:00 – 20:00 - COVID-19 tests at Coubertin Stadium

Antigen tests are mandatory for all participants (see protection plan below)

THURSDAY – COVID-19 TESTS AND WEAPON CONTROL

- 08:00 – 20:00 - COVID-19 tests and weapon control at Coubertin Stadium

Antigen tests are mandatory for all participants (see protection plan below)

FRIDAY – INDIVIDUAL PRELIMINARY ROUND

- 8:00 - Opening doors and weapon control
- 10:00 - Beginning of round of pools
- Followed by - preliminary table of 128

SATURDAY – INDIVIDUAL FINAL ROUND

- 7:30 - Opening doors and weapon control
- 9:30 - Table of 64
- Followed by - Table of 32
- Followed by - Table of 16
- Followed by - Quarter finals
- 17:00 - semi finals, final
-

SUNDAY – TEAM EVENT

- 06:30 - Opening doors and weapon control
- 07:30 - Table of 64 (if necessary)
- 08:30 - Table of 32
- Followed by - Table of 16
- Followed by - Quarter finals
- Followed by - Semi finals
- Followed by - Bronze medal match
- 15:00 - final

COMPETITION VENUE

Stade Pierre de Coubertin, 82 Avenue Georges Lafont 75016 Paris.

Métro: Porte de St Cloud

Parking: Indigo Point du Jour

PARTICIPATION

Alt 1. For Individual World Cup competitions, each national federation may enter a maximum of 12 fencers. The organising country may enter up to 20 fencers plus the number needed to make up the pools.

Team participation is open to all countries and limited to one team per weapon per country.

ENTRY

Every competitor is required to be licensed for the current season.

No fencer is allowed to take part in an official event of the FIE unless he or she is at least 13 years old on 1 January in the year of the competition.

Entries of fencers, teams and referees can only be made at the FIE website, www.fie.org, respecting the deadlines specified in the FIE Rules (cf. o.54).

ENTRY FEE

Individual competition: **EUR 60**.

Team competition: **EUR 400**.

The entry fee can be paid online ([click here](#)) or on-site before the start of the competition.

REFEREE OBLIGATION

The referees are designated by the FIE and delegations will not have to provide any referees.

FORMULA

Individual competitions – One qualifying round of pools, a preliminary direct elimination table, a main direct elimination table of 64 fencers to qualify for a final by direct elimination.

Team competitions – Integral direct elimination with a direct elimination table which may be incomplete. All places in the table up to 16th place will be fought for. From 17th place onwards teams will be classified, within each round of the table, according to their initial place in the table. The first four teams will be placed in the direct elimination table according to the current official team ranking of the FIE (cf. o.86); the remaining ranked teams will be placed in the table by drawing of lots in pairs. The teams that are not classified will occupy the last places in the table and will be separated by drawing of lots (cf. o.42-o.47).

CALL ROOM

Fencers will imperatively need to be in call room twenty minutes before their matches.

DOPING

Doping control will be done according to FIE rules.

COVID-19 PROTOCOL

PLEASE FIND BELOW THE COVID PROTOCOL.

This protocol follows the FIE outlines and the FFE protocol for international competitions.

Antigen tests will be done upon arrival and before checking in the official hotels at the venue on Wednesday (12:00/20:00) and Thursday (08:00/20:00) for all participants.

Non-vaccinated people will need to be tested every day, according to French protocols.

PCR tests will be available on demand at your expense.

You can book your pre-departure COVID test online ([click here](#)).

ACCOMODATION AND TRANSPORT

In order to have the most suitable COVID protection mechanism, **it is mandatory for all teams and athletes to book transport and hotels among the official list trough SPARTNER agency.**

For all booking, please send your booking form to the official email address (teamservices@spartner-agency.com).

Delegations not following this procedure will be denied access to the competition.

See below for the organization hotels and transport solutions.

VISA SUPPORT

Kindly check for visa requirements to **France** before making your ticket reservations. Those who need visa assistance and/or visa support, please contact contact@ffescrime.fr.

FURTHER INFORMATION AND CONTACT PERSON

Manon COTTREL, Event Manager: manon.cottrel@ffescrime.fr

Communication and Event Department: communication@ffescrime.fr

EVENT PROTECTION PLAN

CHALLENGE MONAL - PARIS

15-17 APRIL 2022

I. CONTEXT	6
II. COVID-19 TESTING & PROTOCOLS	7
1. Protection measures	7
2. COVID-19 symptoms	7
3. Close contact definition	8
4. Vaccination	8
5. COVID-19 testing	9
6. COVID-19 Testing fees	9
7. Positive COVID-19 test result	10
8. PCR test result communication	10
9. COVID-19 testing area and opening hours	10
III. PRIOR TO ARRIVAL	10
IV. ARRIVAL	11
V. DURING THE EVENT	11
1. Transport	11
2. Accommodation	12
3. On venue catering	12
4. Operation	12
VI. DISCIPLINARY	13

I. CONTEXT

The Local Organizing Committee has developed this COVID-19 Protection Plan which establishes the principles, protocols, and general guidelines to be followed by all participants before and throughout the event. This document aims to inform participants about the measures put in place to reduce the possibility of viral transmission to a minimum during the Event.

These measures complement the sanitary requirements prescribed by public authorities.

Please take time to understand the plan and steps you must take and rules you must comply with before you travel and throughout the length of your stay in Paris. It's crucial that you take personal responsibility for your part in the plan.

The health protocol applied to the public will be established according to the obligations presented by the competent authorities.

Given the changing nature of the COVID-19 pandemic, the Event's COVID-19 Protection Plan is a dynamic document that is subject to change in response to any circumstances that may arise prior to or during the Event.

This document is binding to all officials (FIE staff, team officials, judges, guests) and athletes registered for competing or otherwise participating in the competitions.

Participants must declare their understanding of these requirements and must return in excel format the "Challenge Monal – COVID form" document.

II. COVID-19 TESTING & PROTOCOLS

1. Protection measures

All participants taking part in the Event are expected to abide by the following practices, regardless of their function and role, in order to protect themselves and other participants:

- Wash/sanitize your hands frequently, especially if you have had contact with another person or an object of common use and when you enter a new area.
- No handshakes. Use a contactless greeting.
- Always wear a surgical mask when outside of your hotel room, changing the mask every 4 hours and/or if the mask is soiled or damp ([cf. World Health Organization guidance on wearing a mask](#)). It is important you make sure you have access to enough face masks (surgical masks) to last through your stay in France. Everyone is responsible for their own supply.
- Proactively monitor their health for any COVID-19 symptoms (World Health Organization Website: https://www.who.int/health-topics/coronavirus#tab=tab_3)
- Always cough into your mask, sleeve or a tissue.
- Maintain social distancing as much as possible (minimum 1,5 meters), especially during mealtimes and on transportation services. Avoid meetings in small areas.
- Practice routine daily hygiene (showering at the start of the day and after physical activity is recommended).
- Sanitize/disinfect personal items frequently, including your mobile phone, accreditation, water bottle, pens, etc.
- Avoid sharing your personal items with others (mobile phone, water bottle, pens, etc.).
- Always wear your accreditation to confirm that you are part of the Event (hotel, transport, and venue).
- Carefully respect all instructions and requirements set forth by the Organizers.
- Strictly follow the Event principle of operations for the best protection of all participants.
- Any activity or travel outside of the Event is prohibited. If an emergency arises, any travel or activity outside of the Event must be declared and validated by the LOC COVID-19 manager (Luc LENGLET - +33 7 64 35 86 15 – lenglet@spartner-agency.com)

2. COVID-19 symptoms

COVID-19 symptoms include the following (refer to the [WHO web page](#) for more details):

- Fever of 37.9 ° C or more
- Cough
- Sore throat
- Shortness of breath
- Muscle pain
- Headache
- Diarrhea and / or vomiting
- Sudden loss of taste and / or smell.

If any participant has symptoms, he/she shall immediately:

- 1) Inform the LOC COVID-19 Manager
- 2) Isolate himself at the official hotel in a separate room
- 3) Have a COVID-19 autotest

3. Close contact definition

Anyone who shared the same living quarters as the confirmed or probable infected person.

Any person who has had direct face-to-face contact with an infected person, within 2 meters, for any length of time (e.g. conversation, meal, physical contact). On the other hand, people encountered in a public space in a fleeting manner, even if they are not wearing a mask, are not considered to be close contacts.

Any person who has performed or received acts of hygiene or care on/from an infected person.

Anyone who has shared a confined space (office or meeting room, personal vehicle, etc.) with an infected person for at least 15 consecutive or cumulative minutes over 24 hours or who has been face-to-face with them during several episodes of coughing or sneezing.

If a participant is considered as a "close contact" he/she will have to be isolated and tested. If his/her test is negative, the participant can stay in the Event.

Any close contact shall:

- 1) Be immediately placed into isolation in a single room (at their own cost)
- 2) He/she will be taken immediately to a doctor for examination + have an COVID-19 autotest
- 3) If the autotest is positive see *7. Positive COVID-19 autotest result*

If a team member has a positive test result, his/her entire team will be considered as close contact

4. Vaccination

To be considered as vaccinated, all participants must have been vaccinated with an EMA-approved vaccine or similar as below :

- person with 3 shots of Pfizer/BioNTech or Moderna or AstraZeneca/Vaxzevria/Covishield vaccine - 7days after the 3rd shot
- person with 2 shots of Pfizer/BioNTech or Moderna or AstraZeneca/Vaxzevria/Covishield vaccine - if the 2nd shot is from less than 4 months
- person with 1 shot of Johnson & Johnson vaccine + 1 shot of Pfizer/BioNTech or Moderna or AstraZeneca/Vaxzevria/Covishield vaccine - if the 2nd shot is from less than 4 months
- person with a certificate of contraindication to vaccination
- 1 infection to COVID 19 = 1 shot of vaccine.

All persons with another vaccination schedule will not be considered as vaccinated.

Every participants must have with him/her every documents (vaccination certificates, recovery certificate, certificate of contraindication...) during the entire competition period.

5. COVID-19 testing

Testing will be a crucial part of minimizing transmission: used for general screening during the Event; as well as used for diagnosis for close contacts or those experiencing symptoms of COVID-19.

Before being tested, any participant needs to fill the “Challenge Monal – COVID form” document.

The French government has set up a specific regulation depending on the country each participant will be coming from, depending on the sanitary situation in this country. There are two levels: **Orange flagged countries** and **Green flagged countries**. In order to know in which level your country is, please check the French government information (<https://www.diplomatie.gouv.fr/fr/conseils-aux-voyageurs/informations-pratiques/article/coronavirus-covid-19>).

The following table summarizes the testing plan put in place for the Challenge Monal :

Who?	Purpose?	When?	Which type?	Where?	Turnaround Time?
Everyone	Screening	On arrival	Antigen test	Competition venue	Approximately 20 min
	Symptoms	Any day	Supervised autotest	Competition venue	Approximately 20 min
	Close contact	Any day	Supervised autotest	Competition venue	Approximately 20 min
Persons not vaccinated	Screening	Everyday	Supervised autotest	Competition venue	Approximately 20 min
On demand (on the “Challenge Monal – COVID form” document)	Departure test	Saturday	Antigen test or PCR test	Competition venue	Approximately 20 min (Antigen test) or 24 hours (PCR test)

6. COVID-19 Testing fees

On arrival and everyday tests costs will be supported by the organizers. Departure and other (symptoms/close contact/PCR or antigenic test after a positive autotest) tests will be supported by the participant. Each test will be charged 100€.

To avoid cash exchange during the event, delegations have the possibility to register and pay for engagements (individual and team events) online, via HelloAsso : [CLICK HERE](#).

Registered fencers receive an QR code that they will need to bring with need to complete their engagement on-site. If delegations still want to pay cash on site, it will be possible as usual, but we strongly advise to register on this website as well to receive a QR code and to limit interactions.

7. Positive COVID-19 test result

In the case of a participant gets a positive result for COVID-19 after an autotest, he/she will have to do an antigenic test (at his/her own costs). If the antigenic test is negative, he/she will be considered as negative to COVID-19, if the test is positive, he/she will:

- 1) Be immediately placed into isolation in a single room (at their own cost)
- 2) He/she will be taken immediately to a doctor for examination
- 3) Depending on the doctor's examination conclusion, actions to be followed will be defined

If a participant has a positive antigenic test, he/she will have to be placed in an isolation room at the expense of the participant / travel insurance if applicable, or at the designated hospital if needed. He/she will not be allowed to return to their country of origin until their isolation period has been completed.

The LOC COVID-19 Manager will follow up on the patient's situation directly with the relevant Team Manager.

All individuals placed in isolation should be isolated for 7 days and not have any contact with any other individuals during that period. As per France's local regulations, after 5 days of isolation if the participant is fully vaccinated + has a negative PCR test + no symptoms in the last 48 hours, then the participant can stop his/her isolation.

As a result of any isolation periods, the LOC will liaise with the hotel and support the National Federation with requirements. **Participants must ensure they have appropriate medical insurance to cover routine medical healthcare, including COVID-19 care, hospitalization and, in case of isolation, that such insurance cover has no exclusions or limitations regarding the length of stay, as all costs related to a positive COVID-19 will have to be borne by the participant.**

8. PCR test result communication

Autotest results will be communicated face to face in the competition venue.

Antigenic test results will be send to the participants by email and text message.

9. COVID-19 testing area and opening hours

The COVID-19 testing area for the Event will be located on the first floor of the competition venue.

Testing area will be open as below:

- Wednesday 13th April: 12.00pm – 8.00pm
- Thursday 14th April : 8.00am – 8.00pm
- Friday 15th April: 4.00pm – 7.00pm
- Saturday 16th April : 4.00pm – 7.00pm
- Sunday 17th April : 7.00am – 10.00am

III. PRIOR TO ARRIVAL

The journey does not begin upon arrival in France. Starting now, participants should ensure they take time to read and understand the steps that must be followed prior to their arrival in France. All Event participants should:

- 1) Book accommodation and transportation through the LOC – teamservices@spartner-agency.com.

Any delegations not following this procedure will be denied access to the competition.

- 2) Read this document and fill the “Challenge Monal – COVID form” document and send it back to – teamservices@spartner-agency.com.
- 3) Monitor their health status continuously, including taking their temperature and monitoring for any symptoms (World Health Organization Website: https://www.who.int/health-topics/coronavirus#tab=tab_3) from 14 days before the Event.
- 4) Limit their social interactions as much as possible from 14 days before the Event.
- 5) Make sure they know the latest information regarding COVID-19 testing and certificates required by their airline/train company.
- 6) Make sure that they have completed the necessary steps should they need to apply for a Visa and/or Compelling Reason to travel to France.
- 7) Have travel insurance that covers COVID-19 care.

IMPORTANT:

All participants must meet all the above requirements as well as the “Arrival” procedures to enter France.

DO NOT TRAVEL TO FRANCE IF YOU:

- Experience any COVID-19 symptoms within 14 days prior to departure
- Are self-isolating as a result of COVID-19 symptoms or have been in contact with someone who has had symptoms
- Have had a positive PCR test within 14 days prior to departure

IV. ARRIVAL

Upon arrival, participants must observe the instructions of the French authorities and be ready to show to immigration all documents needed.

From the airport or the train station, participants which are not considered as vaccinated will be transported to the competition venue for the mandatory upon-arrival Antigen test.

V. DURING THE EVENT

1. Transport

During transport, all participants must respect the following requirements:

- Wearing a surgical mask is mandatory within official Event transportation.
- No food/drinks are allowed in transportation.
- All participants are required to sanitize their hands before entering the vehicle.

All vehicles will be disinfected at the end of each journey. At the end of each day vehicles will be thoroughly disinfected. Drivers will ensure they have a clean and disinfected vehicle between each trip. Whenever possible, they should open windows of the vehicle to facilitate ventilation. Every vehicle will be large enough to respect social distancing. Different groups will not be mixed.

During arrival and departure, participants will have to carry their own bags - the driver will not be allowed to touch them. Upon arrival, participants will be transported in the Event official transport shuttles to the competition venue for their Arrival COVID-19 Antigen test.

IMPORTANT:

All participants must use the official transportation provided by the LOC for arrival/departure and no other private or public transportation means.

2. Accommodation

The official hotel will not be exclusive. Participants are strongly recommended to not enter room of other participants (except for Physiotherapy treatments). The use of masks is mandatory in the hotels' common areas. Physical distancing measures will be implemented throughout the hotel. Sanitizing stations will be displayed near the front entrance and in the common areas. Increased cleaning and disinfecting frequency throughout the hotel, paying attention to frequently touched items. Housekeeping team will change towels and ventilate the room. Participants will have the possibility to display a door hanger should they not wish to have housekeeping enter their room. Hotel staff will follow the hotel protocols.

Dining areas:

- Use hand sanitizer when entering the dining area.
- Wear masks at all times, except when eating or drinking.
- Social distancing must be respected at all times.
- Tables will be spaced apart and participants should not move the tables and/or chairs.
- It is advised that members from different teams do not share tables.

3. On venue catering

A refreshment bar will be available in the competition venue for participants, in a specific and exclusive area. Catering staff members will wear face masks at any time and will serve each participant. Specific flow/pathway will be organized in order to reduce gathering. Participants must wear facemasks until they sit in the "Teams" areas in the grandstand. Social distancing must be respected at all times. After receiving their refreshments all participants must stay and eat in the "Teams" area in the grandstands. Anyone not eating or drinking must wear a mask.

4. Operation

Competition:

Competition will be held in the Stade Pierre de Coubertin: 82 Avenue Georges Lafont, 75016 Paris. Participant will have full access to -1 level (locker rooms, training and competition facilities, weapon control area, Judges DT, call room). On 0 level, a specific area in the grandstands will be reserved for teams and participants. On +1 level, there will be the testing area.

Training:

Training will be in the same stadium as the competition. Training in the venue won't be possible on Thursday.

Fencing gear suppliers:

As they're located in the entrance hall, fencing gear suppliers will only be available outside of the public opening hours. We strongly encourage you to contact the suppliers before the event to place an order and pick up your order on Thursday. The following suppliers will be present at the venue: Leon Paul, Escrime Diffusion, Prieur, Planète Escrime and Royal Escrime.

Participant must respect protection measures (*see II/1. Protection Measures*) at all times.

VI. DISCIPLINARY

French authorities are allowed to control if the Sanitary Protocol is followed by all participants. All failure to adhere to the Sanitary Protocol may result to a 1500€ fine (up to 3000€ if recidivism) by French authorities.

Possible disciplinary decision will be handled by the organising committee with the FIE Supervisor approval.

Challenge Monal 2022 – PARIS

15th to 17th of April, Stade Pierre de Coubertin

Accommodation & Airport Transfers





For booking : teamservices@spartner-agency.com / +33 (0)7.64.35.86.15

Option 1 – Radisson Blu Boulogne 4*



RATES PER PERSON PER NIGHT: BREAKFAST AND ALL TAXES INCLUDED

ROOM TYPE	<u>Week:</u> from Monday to Thursday	<u>Week-end:</u> from Friday to Sunday
 SINGLE	215 €	155 €
 ½ TWIN	118 €	90 €

HOTEL :

- Ⓞ Classification : 4*
- Ⓞ Distance to venue : 0,3 km, 5 min by walk
- Ⓞ Check in : 15:00 / Check out : 12:00
- Ⓞ Buffet breakfast : 06:30-10:00 (week-end : 07:00-11:00)
- Ⓞ Free Luggage room available

ROOM DETAILS :

- Ⓞ Bathroom
- Ⓞ Free WIFI
- Ⓞ Cable with flat screen TV
- Ⓞ Desk
- Ⓞ Hair dryer
- Ⓞ Safe deposit box

After the 15th March 2022 → 100% cancellation fees

Option 2 – Mercure Paris Boulogne 4*



RATES PER PERSON PER NIGHT: BREAKFAST AND ALL TAXES INCLUDED

	ROOM TYPE	<u>Week:</u> from Monday to Thursday	<u>Week-end:</u> from Friday to Sunday
	SINGLE	220 €	165 €
	½ TWIN	120 €	95 €

HOTEL :

- ⦿ Classification : 4*
- ⦿ Distance to venue : 0,1 km, 2 min by walk
- ⦿ Check in : 15:00 / Check out : 12:00
- ⦿ Buffet breakfast : 06:30-10:00 (week-end : 06:30-11:00)
- ⦿ Free Luggage room available

ROOM DETAILS :

- ⦿ Bathroom
- ⦿ Free WIFI
- ⦿ Cable with flat screen TV
- ⦿ Hair dryer
- ⦿ Safe deposit box



After the 15th March 2022 → 100% cancellation fees

Option 3 – Apparthôtel Mercure Paris Boulogne 4*

Appart
hôtel



RATES PER PERSON PER NIGHT: BREAKFAST AND ALL TAXES INCLUDED

ROOM TYPE	<u>Week:</u> from Monday to Thursday	<u>Week-end:</u> from Friday to Sunday
 SINGLE	195 €	150 €
 ½ TWIN	113 €	88 €

HOTEL :

- Ⓞ Classification : 4*
- Ⓞ Distance to venue : 0,1 km, 2 min by walk
- Ⓞ Check in : 15:00 / Check out : 12:00
- Ⓞ Buffet breakfast : 06:30-10:00 (week-end : 06:30-11:00)
- Ⓞ Free Luggage room available

ROOM DETAILS :

- Ⓞ Kitchen (Microwave, cooktop)
- Ⓞ Bathroom
- Ⓞ Free WIFI
- Ⓞ Cable with Flat screen
- Ⓞ Safe deposit box

After the 15th March 2022 → 100% cancellation fees

Option 4 – Ibis Styles Paris XVI Sud 3*



RATES PER PERSON PER NIGHT: BREAKFAST AND ALL TAXES INCLUDED

ROOM TYPE	<u>Week:</u> from Monday to Thursday	<u>Week-end:</u> from Friday to Sunday
SINGLE	150 €	140 €
½ TWIN	90 €	85 €

HOTEL :

- ⦿ Classification : 3*
- ⦿ Distance to venue : 0,25 km - 3 min by walk
- ⦿ Check in : 12:00 / Check out : 12:00
- ⦿ Buffet breakfast : 06:00-10:00 (week-end : 06:00-11:00)
- ⦿ Free Luggage room available

ROOM DETAILS :

- ⦿ Superior Twin room: 20m²
- ⦿ Bathtub in the Twin room
- ⦿ Free WIFI
- ⦿ Cable with Flat screen
- ⦿ Desk

After the 15th March 2022 → 100% cancellation fees

Option 5 – Ibis Style Boulogne Marcel Sembat 3*



RATES PER PERSON PER NIGHT: BREAKFAST AND ALL TAXES INCLUDED

	ROOM TYPE	<u>Week:</u> from Monday to Thursday	<u>Week-end:</u> from Friday to Sunday
	SINGLE	130 €	125 €
	½ TWIN	75 €	73 €

HOTEL :

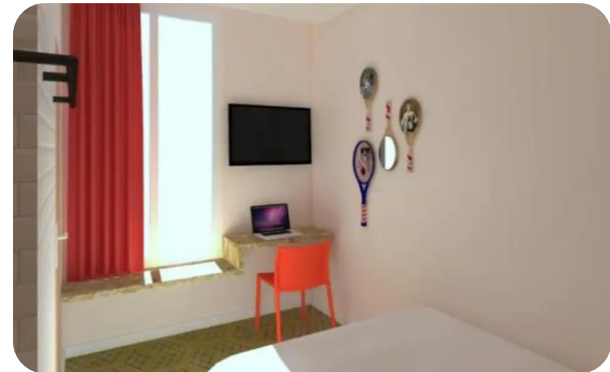
- ⦿ Classification : 3*
- ⦿ Distance to venue : 1 km - 12 min by walk
- ⦿ Check in : 12:00 / Check out : 12:00
- ⦿ In your room or in the restaurant Breakfast : 06:30-10:00 (week-end : 06:30-11:00)
- ⦿ Free Luggage room available

ROOM DETAILS :

- ⦿ Bathroom
- ⦿ Free WIFI
- ⦿ Cable with Flat screen TV
- ⦿ Desk
- ⦿ Hair Dryer

After the 15th March 2022 → 100% cancellation fees

Option 6 – Greet hôtel 3*



RATES PER PERSON PER NIGHT: BREAKFAST AND ALL TAXES INCLUDED

	ROOM TYPE	<u>Week:</u> from Monday to Thursday	<u>Week-end:</u> from Friday to Sunday
	SINGLE	130 €	125 €
	½ TWIN	75 €	73 €

HOTEL :

- ⦿ Classification : 3*
- ⦿ Distance to venue : 1 km - 13 min by walk
- ⦿ Check in : 12:00 / Check out : 12:00
- ⦿ In your room or in the restaurant Breakfast : 06:30-10:00
- ⦿ Free Luggage room available

ROOM DETAILS :



- ⦿ Bathroom
- ⦿ Free WIFI
- ⦿ Cable with Flat screen TV
- ⦿ Desk
- ⦿ Hair Dryer

After the 15th March 2022 → 100% cancellation fees

Option 7 – Holiday Inn Paris - Auteuil 3*



RATES PER PERSON PER NIGHT: BREAKFAST AND ALL TAXES INCLUDED

ROOM TYPE	<u>Week:</u> from Monday to Thursday	<u>Week-end:</u> from Friday to Sunday
 SINGLE	195 €	175 €
 ½ TWIN	115 €	105 €

HOTEL :

- ⦿ Classification : 3*
- ⦿ Distance to venue : 0,5 km - 7 min by walk
- ⦿ Check in : 15:00 / Check out : 11:00
- ⦿ In your room or in the restaurant Breakfast : 07:00-10:00
- ⦿ Free Luggage room available

ROOM DETAILS :

- ⦿ Bathroom
- ⦿ Free WIFI
- ⦿ Cable with Flat screen TV
- ⦿ Desk
- ⦿ Hair Dryer

After the 15th March 2022 → 100% cancellation fees

Option 8 – Ibis Issy Val de Seine 3*



RATES PER PERSON PER NIGHT: BREAKFAST AND ALL TAXES INCLUDED

ROOM TYPE	<u>Week: from Monday to Thursday</u>	<u>Week-end: from Friday to Sunday</u>
SINGLE	130 €	125 €
½ TWIN	75 €	73 €

HOTEL :

- ⦿ Classification : 3*
- ⦿ Distance to venue : 2 km - 25 min by walk
- ⦿ Check in : 12:00 / Check out : 12:00
- ⦿ In your room or in the restaurant Breakfast : 06:30-10:00
- ⦿ Free Luggage room available

ROOM DETAILS :

- ⦿ Bathroom
- ⦿ Free WIFI
- ⦿ Cable with Flat screen TV
- ⦿ Desk
- ⦿ Hair Dryer

After the 15th March 2022 → 100% cancellation fees

Transfers Solutions

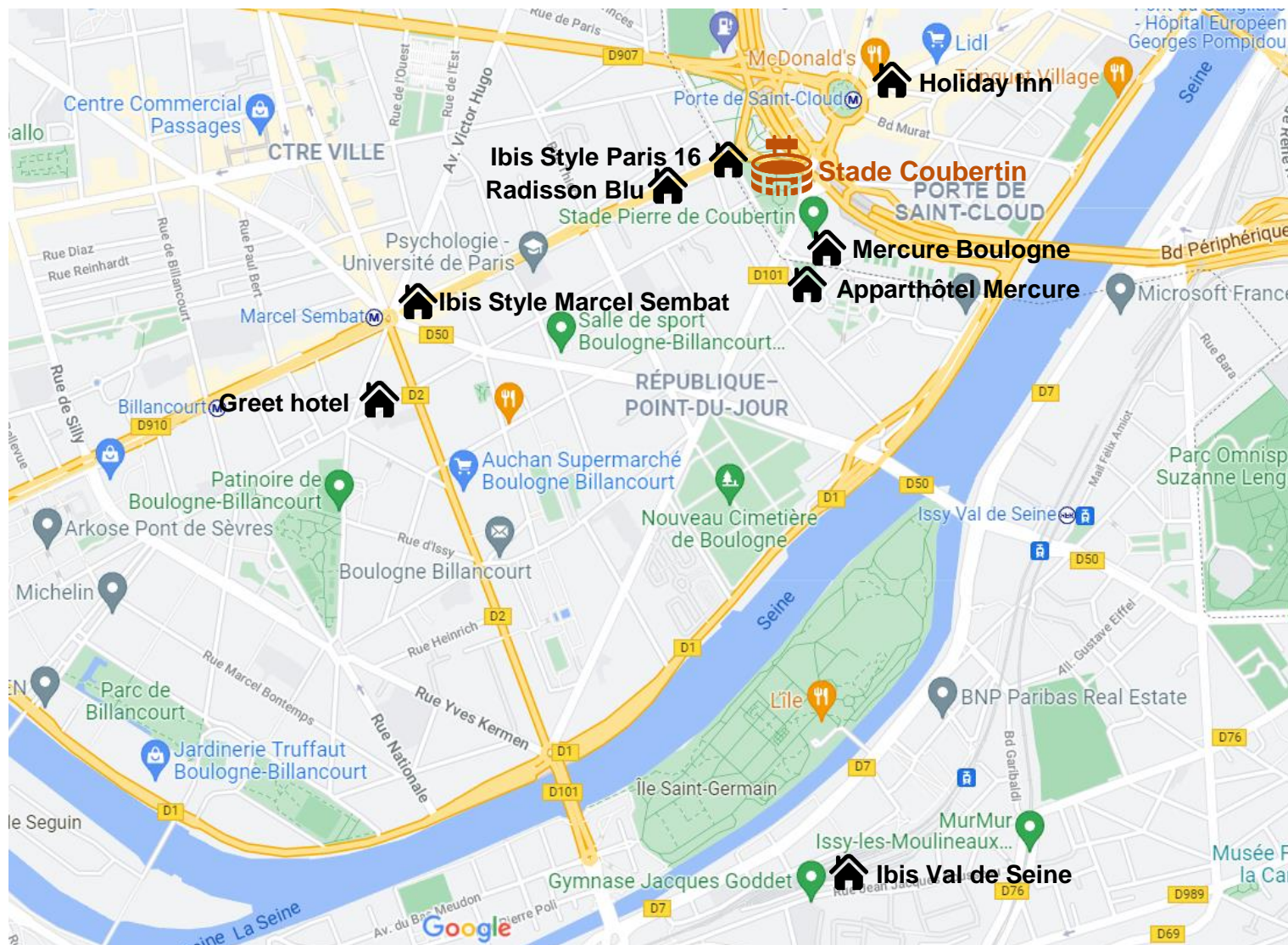


AIRPORT & TRAIN STATION TRANSFER

- **Transfers to and from Parisian International Airports (CDG or ORY) or Train Stations**
- Transfers by **private car, minibus or coach**
- **Welcome on arrival at airsoft**

NUMBER OF PASSENGER	PRICE per PERSON per TRANSFER	
	1	2 and more
ORY Airport to HOTEL (one way)	48 €	37 €
CDG Airport to HOTEL (one way)	59 €	44 €

Mapping – Hotels & Competition venue





teamservices@spartner-agency.com

00 33 (0) 7 64 35 86 15

Dead line : **15/03/2022**



SPARTNER



Challenge Monal 2022 - Accommodation Form (hotels)

Please fill in every sheets (select the sheets at the bottom of the page)

TEAM	
CONTACT NAME, SURNAME	
BILLING ADDRESS	
E-MAIL	
MOBILE PHONE NUMBER	
HOTEL (subject to availability)	Radisson Blu Boulogne 4*

SINGLE ROOMS	No*	First Name	Name	Arrival date	Departure date
	1				
	2				
	3				
	4				
	5				
	6				
	7				
	8				

*Add more lines if needed

TWIN ROOMS	No*	First Name	Name	Arrival date	Departure date
	1				
	2				
	3				
	4				
	5				
	6				
	7				
	8				

*Add more lines if needed

PAYMENT DETAILS (please select your payment method)	<input checked="" type="checkbox"/> Credit card (MASTER CARD or VISA)*	<input type="checkbox"/> I choose to pay by Credit card (Master Card or VISA)
	Credit card type	
	Credit card number	
	Expiry date	
	Security code (CVC code)	
	Cardholder's name	

*Please note that a 0,6% banking fee will apply for credit card payments

Bank account transfer	<input type="checkbox"/> I choose to pay by Bank account Transfer
Bank account	Credit Agricole Centre - Est
Swift	AGRIFRPP878
IBAN	FR76 1780 6008 6904 1322 2022 659

Deadline reservation is on March 15th 2022
Rooms are subject to availability by the time of your reservation
After March 15th 2022, cancellation fee is 100% of the room rate

Contact : Luc LENGLET Tel : +33 (0) 7 64 35 86 15 @ : teamservices@spartner-agency.com

To confirm your reservation :

- 1) please send us this booking form completed by mail : teamservices@spartner-agency.com
- 2) A proforma invoice and booking contract will be send back to you
- 3) **The reservation will not be valid until the receipt of the signed contract and the full payment**

Date:2021

Signed:name, surname

Challenge Monal 2022 - Accomodation Form (Transport)

TEAM

Important - Notice :

A driver or a member of staff will be welcoming you in the arrival terminal holding a sign to your name.
 A passenger phone number is required for each arrival to facilitate your pick-up.
 In case of any problem at your arrival, please note the emergency number **+33 (0) 7 64 35 86 15**
 The organizer will indicate a suitable pick-up time from your hotel or the venue for your departure

Transfer - Arrival

Names <small>(at least one contact person per arrival)</small>	Number of people	Arrival date	Time of arrival	Airport / train station	Flight number	City of origin	Passenger phone number

*Add more lines if needed

Transfer - Departure

Names <small>(at least one contact person per departure)</small>	Number of people	Departure date	Time of departure	Airport / train station	Flight number	City of destination	Passenger phone number

*Add more lines if needed

Please make your reservation before March 15th, 2022 to guarantee the transfers availabilities.