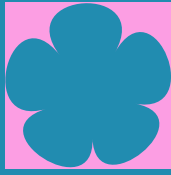




# WUXI 2025

JUNIOR & CADET  
FENCING WORLD CHAMPIONSHIPS  
2025年世界青少年击剑锦标赛

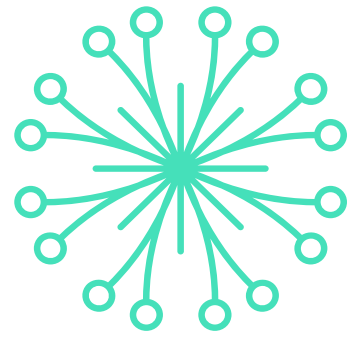




# Table of Contents

About Wuxi	6
Schedule	8
Venue Information	9
Accreditation	10
Visa Application Process	10
Entry Fee	10
Guidelines for Minor Participants	11
Arrival Information	12
Transportation	12
Accommodations	13
Local Contact Details	14
Places to visit in Wuxi	15
Appendix	21





# Welcome to the 2025 Wuxi Junior and Cadet Fencing World Championships!

We look forward to seeing you in Wuxi, China, for the 2025 Junior and Cadet Fencing World Championships. This is the second time Wuxi has hosted a major FIE event, having also hosted our 2018 Fencing World Championships.

I would like to thank the Chinese Fencing Federation for organising this major event. Their commitment to excellence and dedication to fencing is greatly appreciated and promises to be a magnificent competition for all our young athletes from around the world.

More than 1,000 fencers are expected to attend this event with their coaches and delegations from nearly 100 countries, and we have full confidence in the local organisers that the event in every aspect will be superior. With 18 events over nine days, we understand the complexity and challenges in managing such a large competition, and we appreciate all the efforts undertaken to ensure its success.

In addition to the team and individual events taking place for juniors and cadets, the Championships will also include an FIE training camp and multiple activities and programmes to educate athletes and coaches on important initiatives such as Fair Play, Safe Sport, anti-doping and more. Plus, we will have our "Donate Your Fencing Gear!" programme on-site to receive equipment donations to benefit countries in need of support for developing fencing in their regions of the world.

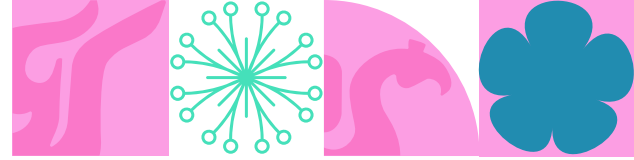
We hope you will also enjoy Wuxi, which is an ancient and major city located in the southern Jiangsu "sheng" (province) in Eastern China, close to the famous Lake Tai and the Yangtze river delta.

I wish you all the very best as you prepare for these Junior and Cadet Fencing World Championships, and we all look forward to seeing you in Wuxi in April, 2025.



**Emmanuel Katsiadakis**  
FIE Interim President





# To All the National Fencing Federations Welcome to Wuxi!

On behalf of the Chinese Fencing Federation, I hereby have the honour and pleasure to invite your federation to participate in the 2025 Junior and Cadet Fencing World Championships, taking place in Wuxi from April 7 to 15, 2025. This city hosted the 2018 World Fencing Championships and the 2023 Asian Fencing Championships, and has a rich experience in organising competitions.

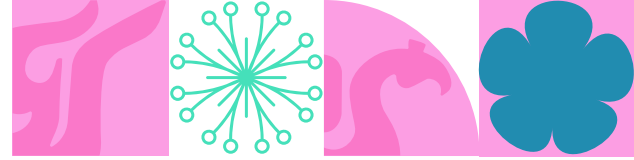
In this presentation, you will find all the necessary and relevant information for the participation of your Federation in the Wuxi 2025 Junior and Cadet Fencing World Championships.

The competition not only provides you with the opportunity to participate in this competition, but also allows you to enjoy the enthusiasm of the people of Wuxi and experience the culture and history of this city.

We are excited to see you in Wuxi!



Sincerely,  
**Haibin Wang**  
President, Chinese Fencing  
Federation



# Welcome Letter for the 2025 Junior and Cadet Fencing World Championships

Ladies and Gentlemen,

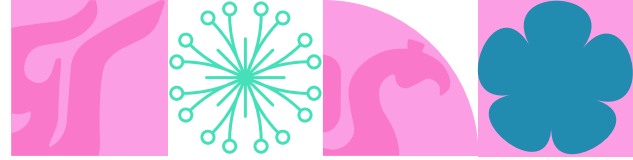
The 2025 Junior and Cadet Fencing World Championships are going to kick off in Wuxi. On behalf of the Municipal People's Government and citizens of Wuxi, I'd like to extend a heartfelt welcome and best wishes to the athletes, coaches, referees, and guests attending the event.

Wuxi is located at the heart of the Yangtze River Delta. It's a century-old city that boasts profound cultural and historical heritages, thriving industry and commerce, livable environment, breathtaking natural landscape, as well as rich tourist resources. It advocates fitness and dynamism, and makes it to build a city of youth, sports and health. The Junior and Cadet Fencing World Championships represent highest level of its kind in the world on a yearly basis. The decision to host this event in Wuxi presents us with a favorable opportunity to advance the cause of sports, showcase city image, and promote sound and orderly development of fencing. We commit ourselves to playing the role of a host to provide exceptional service and bring a best-ever match. By doing so, Wuxi will avail itself of this opportunity to make due contributions to the advancement of fencing and development of the Healthy China Initiative. I look forward to seeing athletes carry forward the sportsmanship of perseverance and determination for excellence, and outdo themselves to excel on the sports field with youthful vigor. Moreover, I hope they'll have fun and foster valuable friendship in this process.

May the 2025 Junior and Cadet Fencing World Championships be a resounding success. I wish you a pleasant stay in Wuxi with many fond memories to take back. Welcome to the beautiful city of Wuxi!



Warm regards,  
**Jianjun Zhao**  
Mayor of the Wuxi Municipal  
People's Government



# About Wuxi

## Welcome Introduction

Wuxi has a long history of more than 3,000 years and is known as the "Pearl of Tai Lake", a prosperous land in the south of the Yangtze River.

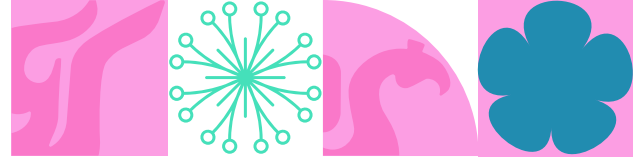
Wuxi has a developed economy and is the birthplace of China's national industry and commerce. In 2023, the city's GDP reached 1.55 trillion yuan, and its per-capita GDP has been the highest among major cities in China for many years.

Wuxi boasts a thriving culture, with a number of national cultural heritages, such as Huishan clay figurines, Yixing purple clay, Wu folk songs, Xiqu Opera, Liuqing bamboo carving, and exquisite embroidery, being inherited and uniquely developed here.

Wuxi has beautiful scenery, with many famous attractions such as Taihu Lake's Turtle Head Peninsula and the Water Margin from the Three Kingdoms period. It is one of the 50 key tourist cities in China.

Wuxi offers a convenient lifestyle, with an airport, high-speed rail system, expressways, and subways forming a three-dimensional modern transportation network. The city is also known for its distinctive traditional culture and delicious local cuisine.

We sincerely invite everyone to visit Wuxi during the Championships and experience the unique charm of this city in person.



# Welcome to Wuxi

## General Information about Wuxi

- **Official Languages:** Chinese
- **Currency:** RMB,  
Payment methods:
  - » Cash
  - » Credit card (UnionPay is the most common, some shops also accept Visa/MasterCard)
  - » Electronic payment (the most payment method), transfer money from bank account to platform account such as Alipay (APP name) WeChat (APP name) via mobile phone, and then scan the code to pay through the platform.
- **Time:** UTC/GMT+08:00
- **Tax:** 13% (VAT)
- **Country Code:** +86
- **Business Opening Hours:** 10:00 am - 20:00 pm
- **Temperature expected (in April):** 13–22°C (55.4–71.6°F).
- **Electrical Voltage:** 220 V
- In China, the commonly used sockets are the Chinese national standard sockets, which are flat two-pin or three-pin plugs (see picture).
- **Supermarkets in Wuxi:** Sam's Club
- **Food delivery Applications:** Ele/Keeta
- **Application for Pick up:** DiDi/Taxi
- **Hospitals In Wuxi:** Wuxi People's Hospital/Affiliated Hospital of Jiangnan University
- **Police Emergency Number:** 110
- **Ambulance Emergency Number:** 120
- **Fire Emergency Number:** 119



## Note

**The following communication and social media applications are not accessible in China:** WhatsApp, Instagram, TikTok, Facebook, Messenger, YouTube, X, Snapchat, Google Apps.

**The following applications are accessible in China:** Teams, Zoom, Skype, WeTransfer.

**WeChat is the most popular daily communication application, download link:**

<https://www.wechat.com/>

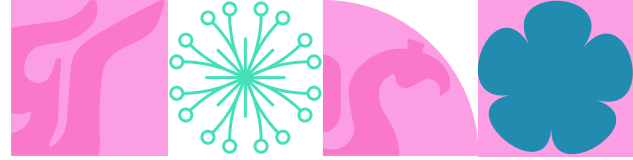
Please be aware that the event does not provide an official VPN.

Any consequences arising from the use of personal VPNs must be borne by the individual.

# Schedule

DATE	COMPETITION
5 April	Start accreditation and weapon control Technical Meeting with technological and software providers
6 April	DT and Referees meeting
7 April	Junior Women's Individual Sabre Junior Men's Individual Sabre Opening Ceremony
8 April	Cadet Women's Individual Sabre Cadet Men's Individual Sabre
9 April	Junior Women's Team Sabre Junior Men's Team Sabre
10 April	Junior Women's Individual Foil Junior Men's Individual Foil
11 April	Cadet Women's Individual Foil Cadet Men's Individual Foil
12 April	Junior Women's Team Foil Junior Men's Team Foil
13 April	Junior Women's Individual Epee Junior Men's Individual Epee
14 April	Cadet Women's Individual Epee Cadet Men's Individual Epee
15 April	Junior Women's Team Epee Junior Men's Team Epee Closing Ceremony





# Venue Information

## Wuxi Taihu International Expo Center B Hall

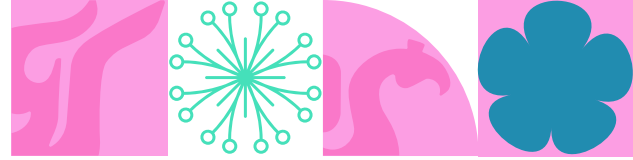
No.88, Qingshu Road,  
Binhu District,  
Wuxi, Jiangsu Province,  
China.

## The Wuxi Taihu International Expo Center

The Wuxi Taihu International Expo Center is a key infrastructure project invested and constructed by Wuxi City. Located in the Taihu New City commercial core area, it covers an area of 170,000 square meters. The surrounding municipal public facilities are complete, the commercial and leisure are perfect, and the public transportation is convenient and fast. Wuxi Metro Line 4 passes by, highlighting its superior location conditions and exhibition environment. The Wuxi Taihu International Expo Center was the venue for the 2023 Asian Fencing Championships. The venue has a competition area of more than 20,000 square meters and 3,500 spectators seats. It has first-class hardware facilities, mature operating conditions, and a complete set of functional

rooms and facilities. It meets and exceeds the competition and training requirements of the Junior & Cadet Fencing World Championships. There are abundant hotel resources around, and the traffic conditions and public security are good. Meanwhile, Wuxi has several-level hospitals with first-class international medical facilities and high-level service teams. During the Junior & Cadet Fencing World Championships, they can provide 24-hour medical and emergency services for the event.





# Accreditation

The accreditation office and system will be located at the competition venues.

Accreditation will start two days before the competition and will operate from April 5–15, 2025 from 08:00-18:00.

Accreditation will be obligatory to access and use internal transport, weapon control, training, the venue, the competition hall, or any other World Championships facility.

- Chiefs of delegations must go to the venue and show the passport of the members of their delegation in order to collect their accreditations.
- Fencers without a chief of delegation will collect their accreditations in person and show their passports.
- Parents accompanying children will not register on the FIE website. They will be accredited directly with the organisers outside in addition to the quota for each delegation.
- A personal photo of the accompanying parents of the athletes must be sent to the e-mail below no later than March 10, 2025.

An ID photo must be sent as "jpg".

An example of the file is: CHN\_Athlete\_Lastname\_Firstname.jpg.

via email to [accreditation@wuxiweiteng.com](mailto:accreditation@wuxiweiteng.com)

# Visa Application Process

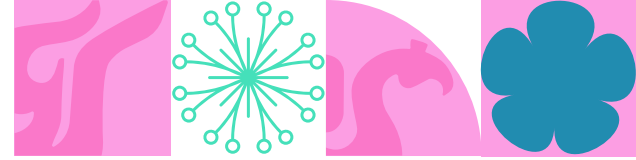
Please Kindly check for visa requirements to CHINA before making your ticket reservations.

Participants who need visa assistance and/or visa support are advised to follow this process:

- Send an email to the organising committee [hdb\\_cisec@163.com](mailto:hdb_cisec@163.com) no later than **March 1, 2025 (requests received after this date may not be processed in time for the event)**, attaching the following documents:
- A duly filled out information for the visa letter form (a copy of the form can be found in appendix).
- A clear copy of each delegation member's passport
- A recent passport photo of each member of your delegation saved with delegate and name (example: KSA\_athlete\_last name\_first name)

# Entry Fee

According to the FIE Administrative Rules (Art. 6.2) , an entry fee of 55 € per fencer for an individual event and 140 € for the team, is to be paid to the organizers before or during Registration.



# Guidelines for Minor Participants

We want our minors to have a smooth and enjoyable experience right from the airport, so we have drafted the following information for them:

## Minors traveling alone

While minors can travel for the Championships on their own, they would need to have the following documents:

- A signed FIE minor athlete travel form (a copy of the form can be found in appendix) and signed by a legal guardian.
- A letter from the minor's national fencing federation stating that the minor is participating in the 2025 Junior and Cadet Fencing World Championships in Wuxi.

## Minor Fencers in Groups

The manager or coach of the group should have the following documents:

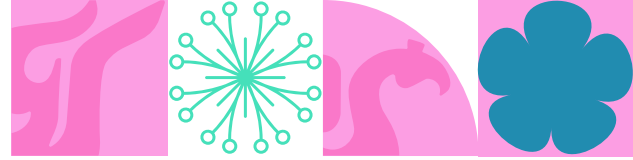
- A letter on the group's official letterhead stating the name of the group, supervising adult, and name of each fencer in the group, along with their address, phone number, date and place of birth, and the name of at least one of the minor's parents.
- A signed letter of consent from the minor's parent or legal guardian.
- A signed FIE minor athlete travel form (a copy of the form can be found in appendix).
- Passport photographs of the parents or legal guardians of each team member.

## Minors Traveling with an Adult

Minors who are traveling with an adult who isn't their parent or guardian are required to have the following documents:

- A signed FIE minor athlete travel form (a copy of the form can be found in appendix).
- Passport copies of parents or legal guardians.
- A signed letter of consent from the minor's parent or legal guardian.

**If you encounter any other problems during the visa application process, please refer to the response from the local Chinese embassy.**



# Arrival Information

Wuxi is served by Sunan Shuofang International Airport, and within a 2-3 hour drive, there are also Shanghai Pudong International Airport, Shanghai Hongqiao International Airport, and Nanjing Lukou International Airport.

We will arrange volunteers at each airport based on your submitted itinerary to welcome athletes and ensure their smooth arrival in Wuxi.

As April 4-6 coincides with a traditional Chinese holiday, road traffic is expected to be very congested. We recommend taking a flight to Beijing, Guangzhou, Chengdu, Hong Kong, or South Korea and then connecting to Wuxi. Our enthusiastic volunteers will be available to assist you!

# Transportation

We offer free airport-hotel transfer services and shuttle bus services from the hotel to the venue for participants who book the official hotel.

## How to reserve transportation:

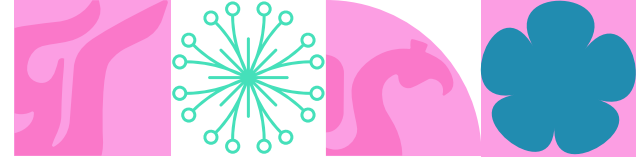
- Fill out the booking form and submit it via email no later than March 15, 2025
- The team will review your reservation

**Please note:** If you do not provide your travel information within the specified time or make sudden changes to your travel plans within 48 hours (except for cancellations or delays due to force majeure), the service cannot be guaranteed.

If you have any questions or need further assistance, please contact:

**[transportation@wuxiweiteng.com](mailto:transportation@wuxiweiteng.com)**





# Accommodations

The LOC has collaborated with some of the best hotels in Wuxi to ensure that participants have access to comfortable accommodations during the event.

Each hotel selected has close proximity to the event venue.

Hotel name	Distance to Venue	Single/Twin Price	Note
InterContinental Wuxi Taihu New City	1KM	€ 259	Including: breakfast, pick-up service (airport-hotel) and shuttle bus (hotel-venue)
Hotel Indigo Wuxi Taihu New City	1KM	€ 259	Including: breakfast, pick-up service (airport-hotel) and shuttle bus (hotel-venue)
Holiday Inn Wuxi Taihu New City	500M	€ 179	Including: breakfast, pick-up service (airport-hotel), walking distance to venues
Holiday Inn Express Wuxi Taihu New City	500M	€ 119	Including: breakfast, pick-up service (airport-hotel), walking distance to venues
HUALUXE Wuxi Taihu	2KM	€ 219	Including: breakfast, pick-up service (airport-hotel) and shuttle bus (hotel-venue)
Somerset Taihu New City CBD Wuxi	2KM	€ 119	Including: breakfast, pick-up service (airport-hotel) and shuttle bus (hotel-venue)
Pullman Wuxi New Lake	5KM	€ 219	Including: breakfast, pick-up service (airport-hotel) and shuttle bus (hotel-venue)
Gloria Grand Hotel Wuxi	3.5KM	€ 119	Including: breakfast, pick-up service (airport-hotel) and shuttle bus (hotel-venue)
AScott New District Wuxi	4.5KM	€ 119	Including: breakfast, pick-up service(airport-hotel) and shuttle bus (hotel-venue)

## Note

If there is a need for meals, you can specify it when booking the room, at a price of 25 euros per meal (Lunch/Dinner).

## How to book a hotel

- Choose a hotel
- Fill out the accommodations form for the hotel you chose.
- Send the form to us via email [accommodation@wuxiweiteng.com](mailto:accommodation@wuxiweiteng.com)
- Once you receive confirmation and invoice, send a copy of the payment bank transfer to confirm your reservation.
- Payments must be made by bank transfer (in euros).
- Cash on arrival only accepted in case a delegation has difficulties with a bank transfer.
- Reservations must be done by March 10, 2025.
- The rates offered and the availability of the rooms are not guaranteed after the deadline mentioned above. Please make sure that bank transfers cover the amount of the invoice and commissions and bank charges.

## Payment Information (Only for euro)

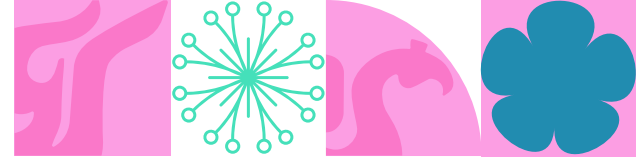
- **Intermediary Bank:**
  - » CITIBANK N.A., NEWYORK
  - » SWIFT BIC: CITIUS33
- **Beneficiary Bank:**
  - » Bank of Jiangsu Co.,Ltd
  - » SWIFT BIC: BOJSCNBN
  - » Address: No.55 Hongwu North Road, Nanjing, China
- **Beneficiary:**
  - » Account Number: 20413888000003516
  - » Name: Wuxi Alut Sports Operation Co.,Ltd

If you have any questions or need further assistance, please contact:

[accommodation@wuxiweiteng.com](mailto:accommodation@wuxiweiteng.com)

## Local Contact Details

Chinese Fencing Association	Telephone: +86 10 68862588 Email: <a href="mailto:event.fe@sports.cn">event.fe@sports.cn</a>
Visa Entry	<a href="mailto:hdb_cisec@163.com">hdb_cisec@163.com</a>
Transportation	<a href="mailto:transportation@wuxiweiteng.com">transportation@wuxiweiteng.com</a>
Accommodation	<a href="mailto:accommodation@wuxiweiteng.com">accommodation@wuxiweiteng.com</a>
Accreditation	<a href="mailto:accreditation@wuxiweiteng.com">accreditation@wuxiweiteng.com</a>



# Places to visit in Wuxi

Wuxi not only boasts beautiful natural scenery but also a rich cultural heritage. Whether you're a history enthusiast or a lover, Wuxi can offer an unforgettable travel experience.



## Taihu Yuantouzhu Scenic Area

A stunning peninsula on the northwest shore of Tai Lake, where you can enjoy cherry blossoms in spring, lotus in summer, lake tours in autumn, and bird watching in winter. Each season offers a beautiful scenery for you to explore!

### Tourist Tips:

**Address:** No. 1, Yuanchu Road, Binhu District, Wuxi Entrance

**Fee:** 12€ per person (reference price)

**Transportation:** Bus No. 1

**Recommended Attractions:** Chongshan Entrance, Chongshan Yinxiu Trail, Sakura Valley, Shanhui Chuanmei Memorial Archway, Taihu Fairyland (round trip by cruise), Superb View of Taihu Lake, Hengyun Mountain Resort, Yuanzhu Chuntao, Guangfu Temple

## Wuxi Huishan Ancient Town Scenic Area

An ancient town with a long history, rich in cultural relics and natural scenery, it's a perfect place to experience Wuxi's historical culture.

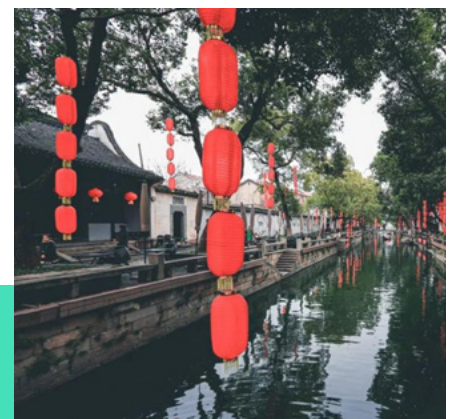
### Tourist Tips:

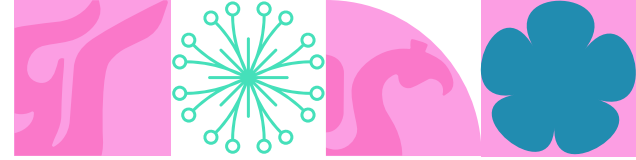
**Entrance Fee:** The historical and cultural block is open for free. Note: The joint ticket for the other three areas is 10€ (including Jichang Garden, Huishan Temple, and other attractions).

**Address:** No. 18 Baoshan Street, Liang District, Wuxi City

**Transportation:** Huishan Ancient Town Station on Subway Line 4 Special

**Recommendations:** Ancient Huishan Town, Jichang Garden, The World Second Best Spring, Huishan Temple, Wuxi China Clay Figurines Museum, Yugong Valley, China Azalea Garden, Erquan Academy, Chunshen Gully.





## Wuxi Ling Mountain Scenic Area

Famous for the Ling Mountain Buddha the Vi-hara, the architecture and performances here are very unique, making it a great place for spiritual purification.

### Tourist Tips:

**Address:** No. 1, Lingshan Road, Masan, Binhu District, Wuxi

**Entrance Fee:** Starting from 26€

**Transportation:** Bus No. 88

**Recommendations:** Visit the Brahma Palace and the Emerging Treasure Pagoda watch performances such as the Auspicious Ode and the Nine Dragons Bathing the Buddha; and make a wish to the carp in the pond.

## Wuxi Meiyuan

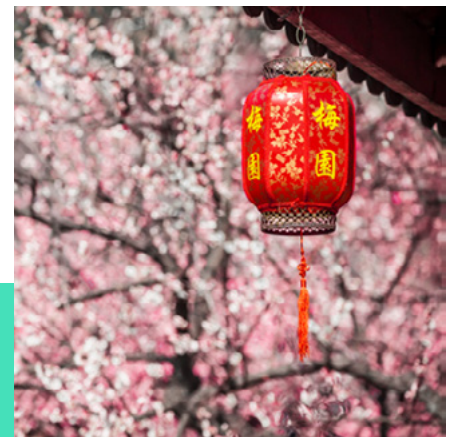
A famous for plum blossom viewing in Jiangnan, with distinct seasonal flower landscapes, especially the plum blossoms in early spring, which are breathtakingly beautiful!

### Tourist Tips:

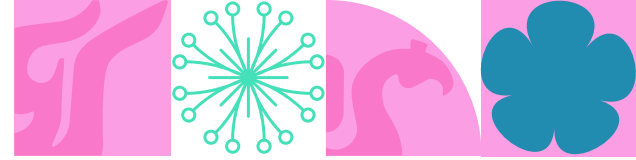
**Address:** No. 13, Bianjia Bay, Liangxi West Road, Binhu District, Wuxi City

**Ticket:** 8€

**Transportation:** Meiyuan Kaiyuan Temple Station, Subway Line 2







## Wuxi Kingdoms and Water Margin Scenic Area

A national 5A-level tourist attraction, known for its magnificent architecture and rich cultural stories.

### Tourist Tips:

**Address:** No. 128, Shanshui West Road, Binhu District, Wuxi City, Jiang Province

**Entrance Fee:** 20€

**Transportation:** Bus No. 82

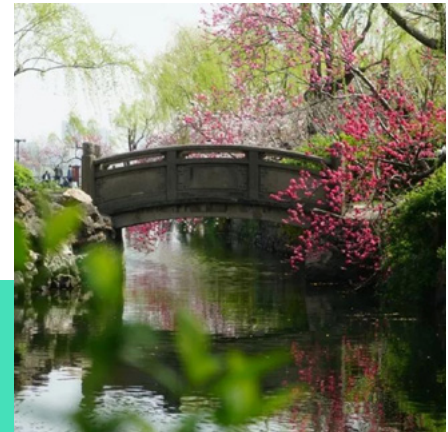
## Wuxi Liyuan

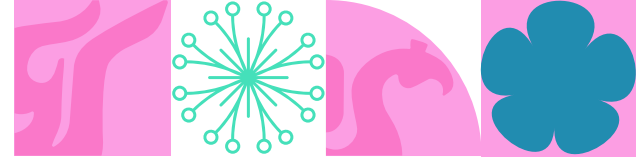
A typical Jiangnan garden, famous for its peach blossoms in spring, it's the best place to experience the classical beauty of Jiang.

### Tourist Tips:

**Address:** No. 18, Huanhu Road, Wuxi

**Entrance Fee:** Starting from 4€





## Wuxi Nianhuabay Scenic Area

A Zen town where the night performances and flower seas make it a perfect place to relax.

### Tourist Tips:

**Address:** No. 68, Huaxi Road, Mashan, Binhu District, Wuxi (near Mountain Scenic Area)

**Entrance Fee:** 20€

**Transportation:** Bus No. 88

**Recommended Features:** Water curtain dance of "One Reed Crosses the River"/ "Five Blossom" / "A Smile from a Flower" performances, as well as the Phantastic Flower Sea

## Wuxi NanChang Street

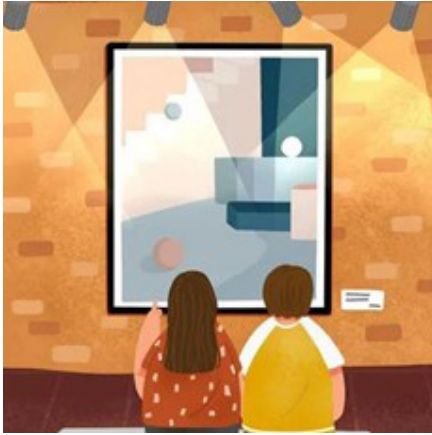
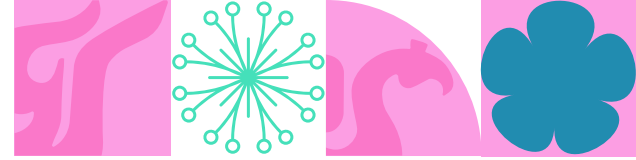
A waterside village by the ancient canal, with a charming Jiangnan town atmosphere in the dim night lights.

### Tourist Tips:

**Address:** The intersection of Nanchang Street and Yongle Road, Liangxi District

**Entrance Fee:** Free





## Wuxi Museum

With its rich collection of cultural relics, is a window to understanding the culture of Wuxi and even Jiangnan.

**Tourist Tips:**

**Address:** No. 100, Zhongshu Road, Liangxi District

**Entrance Fee:** The exhibitions of Wuxi Museum are permanently to the public free of charge.

## Yixing Bamboo Sea Scenic

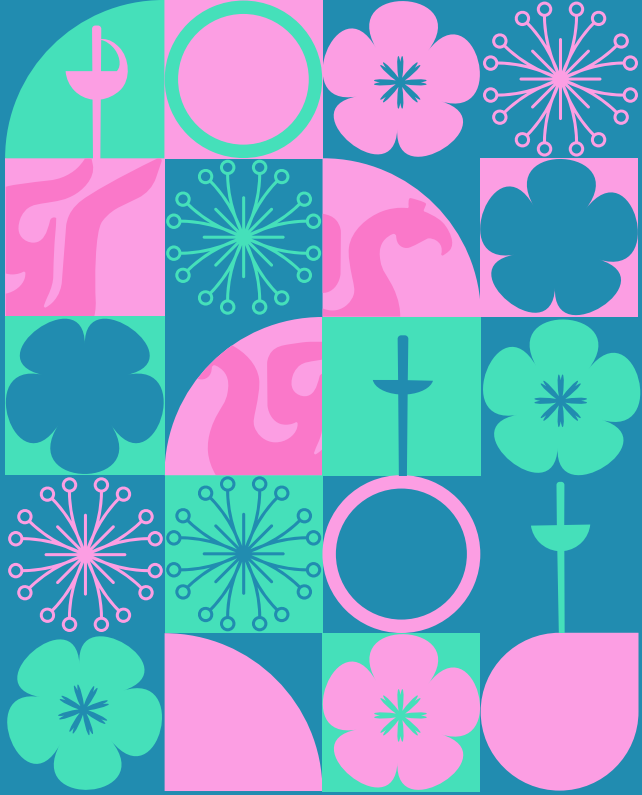
Known as the "Sea of Bamboo", the natural scenery and fresh air here are the best choice to escape the hustle and bustle of the city

**Tourist Tips:**

**Address:** Zhuhai Village, Hufu Town, Yixing City

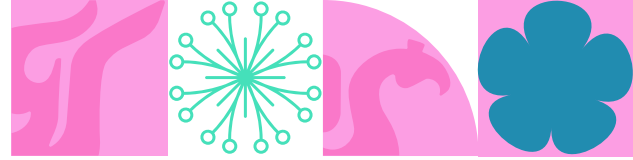
**Entrance Fee:** Reference price 11€





See You in  
**WUXI**





# Appendix

## AUTHORISATION SAMPLE

We, the undersigned:

.....  
(father's surname, name, date and place of birth, passport number)

.....  
(mother's surname, name, date and place of birth, passport number)

**Authorise to represent and act in our name the following person, who:**

- Is of legal age in .....(write the name of the country) to make the decisions mentioned below;
- Has accepted this authority;
- During the period of .....to.....

Surname:.....

Name:.....

Date and place of birth:.....

Nationality and passport number: .....

Address during competition:.....

Phone number during competition:.....

**Authorising the above person to make decisions relative to the health of our child:**

Surname:.....

Name:.....

Date of birth:.....

FIE Licence Number:.....

Nationality and passport number: .....

Father's Signature:

Mother's Signature:

## TRANSPORTATION FORM

Country/Federation:

Address:

Email:

Phone:

Fax

No.	Full Name	Arrival details			Hotel name	Departure details				
		Date	Time	Flight number		Terminal	Date	Time	Flight number	Terminal
1										
2										
3										
4										
5										
6										
7										
8										

This form must be submitted by 15th May 2025, Please email to accommodation@wuxiweiteng.com.

## ACCOMMODATION FORM

Country/Federation:  Address:

Email:  Phone:  Fax:

Names of Officials/Leader:  HOTEL NAME:

No.	Full name (in Capital Letters)		Passport NO.	Check in day	Check out day	Category of the rooms	No. of nights
	Name 1	Name 2					
1				4 <sup>th</sup> April 2025	9 <sup>th</sup> April 2025	Single	5
2	Name 2	Name 3		4 <sup>th</sup> April 2025	10 <sup>th</sup> April 2025	Twin	6
3							
4							
5							
6							
7							
8							

Please note to fill in the room type you need.  
 If two people are sharing one room, please fill the two names in the same row. (As shown in the form)  
**This form must be submitted by 15th May 2025, Please email to [accommodation@wuxiweiteng.com](mailto:accommodation@wuxiweiteng.com) .**

## INFORMATION FOR THE VISA LETTER

NO.	Name of Organization	Position	Given Name	Surname	Gender	Nationality	Date of Birth	Passport No.	Passport Issue Date	Passport Expiry Date	Visa Application Country and City	Arrival Date	Departure Date
1	e.g. Chinese Fencing Association	Athlete	Wu	Huang	M	Chinese	1999/7/11	PE2256989	2024/12/9	2029/12/9	Beijing, China	2025/4/6	2025/4/20
2													
3													
4													
5													
6													
7													
8													
9													
10													

\*Please provide the copy of your passport together with this form.  
Please fill the full name as the first page of your passport.