



**FIE GP**

ONE SERIES, NINE CITIES

**GRAND PRIX  
2025/26**

**SHANGHAI** 🇨🇳

**15-17 MAY  
FOIL**



**FOIL GRAND PRIX  
INVITATION**



## **FIE – GRAND PRIX INVITATION LETTER**

Name of Competition: Foil Grand Prix Shanghai  
City, Country, dates: Shanghai, China, 15-17 May 2026

Dear Friends,

It is with great pleasure that I invite you to the Foil Grand Prix on behalf of the Chinese Fencing Association, which will be held in Shanghai from 15 to 17 May 2026.

Below you will find all essential information for your planning and participation.

With best regards,  
Chinese Fencing Association

### **Organizer**

Host Federation: Chinese Fencing Association  
Address: No. 5, Lao Shan West Street, Shijingshan District, Beijing, China.  
Postcode: 100049  
Tel: +86 1068862588  
Email: [fencing@sports.cn](mailto:fencing@sports.cn)

### **Competition Venue**

Haopu Film and Television Base, Songjiang District, Shanghai (No. 179, Chejia Road, Chedun Town, Songjiang District, Shanghai, China)





## Competition Schedule

Thursday, 14 May

- 09:00–11:30: Weapon Control (at the venue)
- 13:00–16:00: Weapon Control (at the venue)

Friday, 15 May

- 08:00: Weapon Control
- 09:00: Rounds of Pools and Preliminary Eliminations - Men's Foil

Saturday, 16 May

- 08:00: Weapon Control
- 09:00: Rounds of Pools and Preliminary Eliminations - Women's Foil

Sunday, 17 May

- 09:00: Table of 64 – Men's Foil
- 10:30: Table of 64 – Women's Foil
- 18:00: Women's and Men's Semi-finals and Finals

## Participation

- Each national federation may enter a maximum of 12 fencers.
- The organizing country may enter up to 20 fencers, plus the number needed to complete the pools.





## Entries

Entries for fencers and coaches must be made strictly via the FIE website ([www.fie.org](http://www.fie.org)), in accordance with FIE Rules and regulatory deadlines.

## Eligibility

- All participants must hold a valid FIE licence for the current season.
- Minimum age: No fencer shall be eligible to obtain an FIE licence for participation in an official FIE competition until they have attained the age of 13.

## Note

Coaches must be entered via the FIE website and must hold a valid FIE licence for the current season.

## Entry Fee

- Individual Competition: €120.
- The entry fee shall be paid by each national delegation via bank transfer no later than 30 April 2026.
- Payment may also be made in cash at the time of registration, prior to the start of the competition.

## Bank Account Information

Beneficiary Name: SECA LTD

Beneficiary A/C No. (USD): 121909007932301

Beneficiary A/C No. (RMB): 121909007910603

SWIFT Code: CMBCCNBS

Beneficiary Bank: China Merchants Bank

Beneficiary Bank Address: No. 333 Zhaojiabang Road, Shanghai, China

## Referee Obligation

Referees are appointed by the FIE. Delegations are not required to provide referees.





## Competition Rules

The competition will be conducted in accordance with the FIE Rules.

## Equipment

All fencers must be equipped in compliance with FIE Rules and present their equipment for weapon control on the day prior to the competition.

## Competition Formula

One qualifying round of pools, a preliminary direct elimination table, followed by a main direct elimination table of 64 fencers, culminating in finals through direct elimination.

## Anti-Doping

Anti-doping controls will be carried out in accordance with FIE Rules.

## Accommodation and Transport

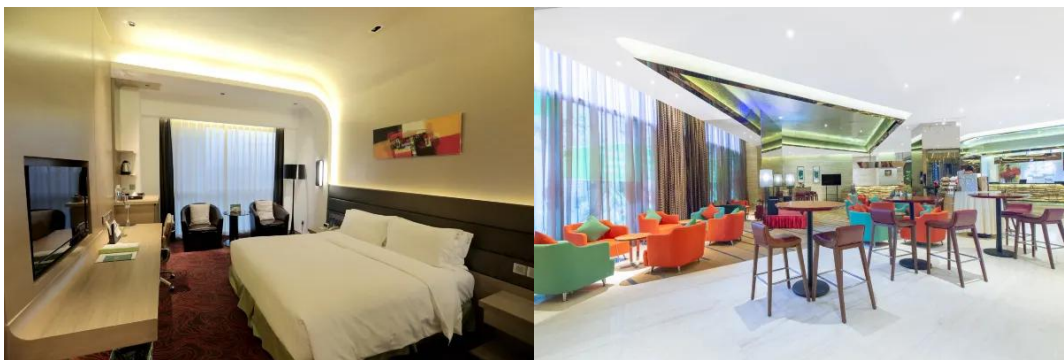
To benefit from the special hotel rates offered by the Organizing Committee, please contact us no later than 30 April and submit the completed hotel and transportation form.

Email: [foil@seca-a.com](mailto:foil@seca-a.com)

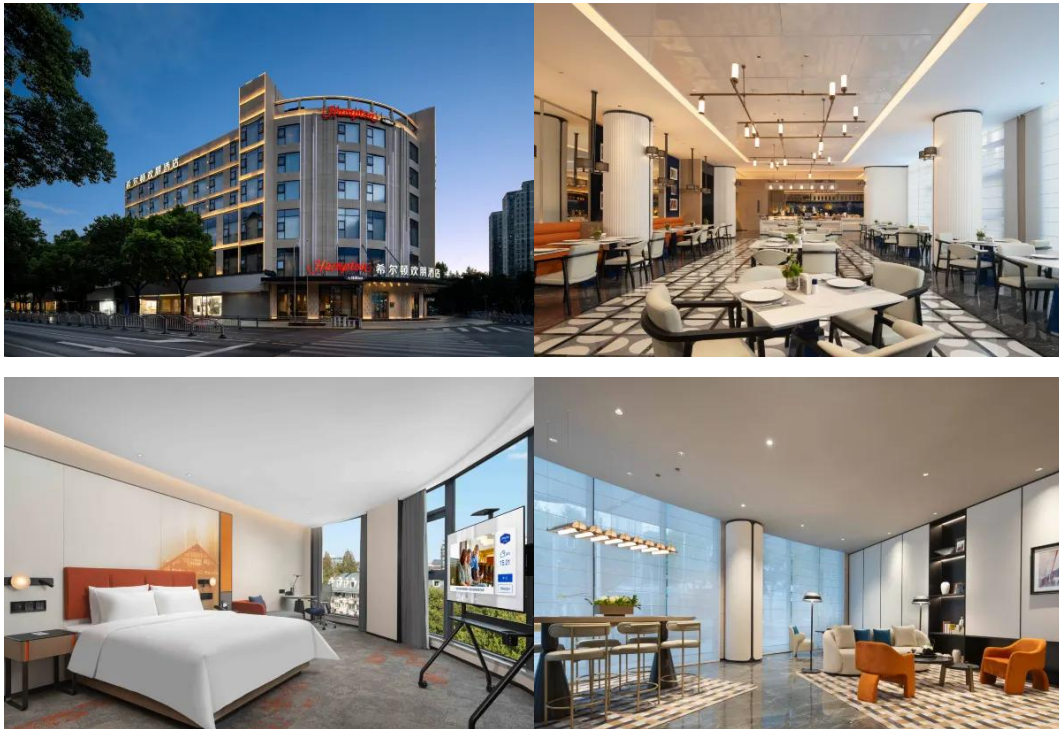
Hotel	Location	Price	Notes
New Century Grand Hotel Shanghai Songjiang ★★★★★	No.1799, Renmin North Road, Songjiang	900RMB/Room/Night (Double Room/ King-sized Room)	
Holiday Inn Shanghai Songjiang ◆◆◆◆	No. 83, Middle Zhongshan Road, Songjiang Shanghai 201600, P.R. China	900RMB/Room/Night (Double Room/ King-sized Room)	
Hampton by Hilton Shanghai Songjiang Railway Station ◆◆◆◆	No.245, Zhongshan Middle Road, Songjiang	750RMB/Room/Night (Double Room/ King-sized Room)	Accommodation is limited; first come, first served.



(Songjiang New Century Grand Hotel Shanghai)



(Holiday Inn Shanghai Songjiang)



(Hampton by Hilton Shanghai Songjiang Railway Station)

**Note:**

1. All rates above include room, breakfast, and shuttle bus service.
2. Any booking resulting in single occupancy will be charged accordingly.
3. A deposit will be collected upon check-in.
4. Check-in time: after 14:00.
5. Check-out time: before 12:00. Check-out between 12:00 and 18:00 will incur a half-day charge; check-out after 18:00 will incur a full-day charge.
6. Rooms will be allocated in order of application. Should the above hotels reach full capacity, alternative accommodations will be arranged and details provided via email.
7. Shuttle service is available only to guests staying at official hotels.
8. For airport pick-up service, please send flight details to Ms. Daisy Wen as early as possible.
9. Airport pick-up is available only between 09:00 and 18:00. Please take this into consideration when booking flights.





### Hotel Payment

Hotel payments shall be made by each national delegation via bank transfer to:  
 Beneficiary's Name: SECA LTD  
 Bene's A/C No.(USD): 121909007932301  
 Bene's A/C No.(RMB): 121909007910603  
 SWIFT CODE: CMBCCNBS  
 Beneficiary's Bank Name: CHINA MERCHANTS BANK  
 Beneficiary's Bank Address: No.333 ZHAOJIABANG ROAD,SHANGHAI,CHINA

### Visa Support

Please check China's visa requirements prior to booking flights. Those requiring visa assistance or support should contact foil@seca-a.com no later than 30 April 2026.

Please send a copy of the passport together with the visa application form to: foil@seca-a.com

### visa application form

visa application form

被邀请人员名单汇总审核表 NAME LIST OF THE INVITED										
序号 NO.	姓 SURNAME	名 GIVEN NAME	性别 SEX	出生日期 YY/MM/DD	国籍 NATIONNA LITY	护照号码 PASSPORT NO.	职业/队内职务 PROFESSION/PO SITION	签证申请国家 APPLYING COUNTRY	签证申请城市 APPLYING CITY	入境日期 DATE OF ENTRY

### Insurance

Each delegation assumes full responsibility for accident and health insurance, as well as civil liability for its competitors and officials during the event.





## Subway Directions from Airports to Hotels

### 1. From Shanghai Pudong International Airport (PVG)

#### A. To New Century Grand Hotel Shanghai Songjiang

1. Airport Link Line: Pudong Airport Station → Zhongchun Road Station (35 min, ¥24)
2. Metro Line 9: Transfer to Songjiang South Railway Station direction → Get off at Songjiang Xincheng Station (Exit 1) (32 min, ¥5)
3. Taxi: 3 km to hotel (10 min, ¥15)

Total time: ~75 min | Total cost: ¥44

#### B. To Holiday Inn Shanghai Songjiang

1. Airport Link Line: Pudong Airport Station → Zhongchun Road Station (35 min, ¥24)
2. Metro Line 9: Transfer to Shanghai Songjiang Railway Station direction → Get off at Zuibaichi Station (Exit 3) (32 min, ¥5)
3. Taxi: 1.2 km to hotel (5 min, ¥12)

Total time: ~70 min | Total cost: ¥41

#### C. To Hampton by Hilton Shanghai Songjiang Railway Station

1. Airport Link Line: Pudong Airport Station → Zhongchun Road Station (35 min, ¥24)
2. Metro Line 9: Transfer to Shanghai Songjiang Railway Station direction → Get off at Zuibaichi Station (Exit 3) (32 min, ¥5)
3. Walk: 641 m north along Renmin South Road (10 min)

Total time: ~75 min | Total cost: ¥29





## 2. From Shanghai Hongqiao International Airport (SHA)

### A. To New Century Grand Hotel Shanghai Songjiang

1. Airport Link Line: Hongqiao Airport Terminal 2 → Zhongchun Road Station (10 min, ¥8)
2. Metro Line 9: Transfer to Songjiang South Railway Station direction → Get off at Songjiang Xincheng Station (Exit 1) (30 min, ¥3)
3. Taxi: 3 km to hotel (10 min, ¥15)

Total time: ~50 min | Total cost: ¥26

### B. To Holiday Inn Shanghai Songjiang

1. Airport Link Line: Hongqiao Airport Terminal 2 → Zhongchun Road Station (10 min, ¥4)
2. Metro Line 9: Transfer to Shanghai Songjiang Railway Station direction → Get off at Zuibaichi Station (Exit 3) (30 min, ¥3)
3. Taxi: 1.2 km to hotel (5 min, ¥12)

Total time: ~45 min | Total cost: ¥19

### C. To Hampton by Hilton Shanghai Songjiang Railway Station

1. Airport Link Line: Hongqiao Airport Terminal 2 → Zhongchun Road Station (10 min, ¥4)
2. Metro Line 9: Transfer to Shanghai Songjiang Railway Station direction → Get off at Zuibaichi Station (Exit 3) (30 min, ¥3)
3. Walk: 641 m north along Renmin South Road (10 min)

Total time: ~50 min | Total cost: ¥7

## Key Notes for All Routes

1. Airport Link Line operates daily from 06:00 to 22:00.
2. Seamless transfer between Airport Link Line and Metro Line 9 at Zhongchun Road Station without exiting the station.
3. Payment options: Shanghai Public Transportation Card, Alipay/WeChat Metro Code, or single-journey tickets.
4. Luggage: Airport Link Line trains are equipped with dedicated luggage racks and charging ports.
5. Taxis are available at all metro exits. Use Didi (China's Uber) for English-friendly bookings.

## Guide to Taking the Subway with Alipay

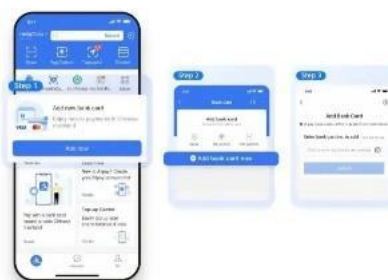
Step 1: Download & Set Up Alipay - Download Alipay (App Store/Google Play). - Register with your passport/mobile number. - Bind a foreign credit/debit card (\*or top up via "Tour Pass" for prepaid use\*).



### 2 绑定银行卡 Add bank card

点击【立即添加】进入绑卡页面, 按照页面提示, 即可完成绑卡操作

Tap "Add now" and follow on-page prompts to complete the process



这些银行卡都支持  
Eligible bank card types



Step 2: Access Metro QR Code - Open Alipay → Tap "Transport" (or search "Metro QR Code"). - Select "Shanghai Metro" → Agree to terms.



Step 3: Activate QR Code - Generate **the QR code** at any station gate. - Scan the code at the ticket gate's QR reader (place code under the scanner).

Step 4: Exit & Payment - Scan **the same QR code** when exiting. - Fare is **auto deducted** from your Alipay balance/linked card.

### Key Tips

- Valid at all Shanghai metro stations.
- The QR code serves as your ticket; no physical ticket is required.
- Please ensure that mobile data or Wi-Fi is available when generating the QR code.
- Check your Alipay balance in advance to avoid payment issues.

